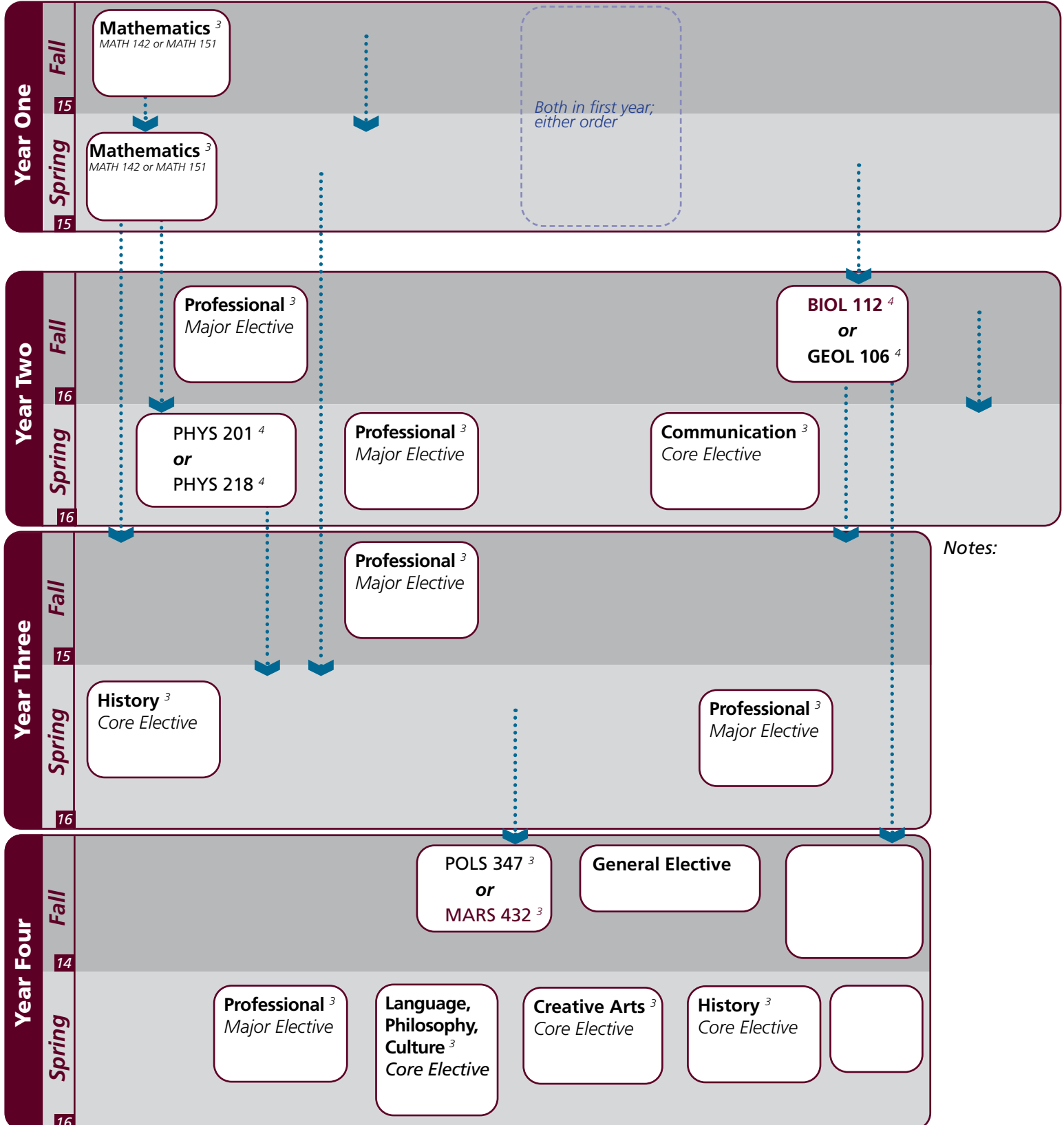


Instructions

- Download this file and open in **Adobe Reader** (get.adobe.com/reader)
- **Click once** on the category/ course to turn blue for **planned courses**.
- **Click twice** to turn yellow for **completed/in progress courses**.
- For elective areas, also select the appropriate course from the dropdown.
- **Submit via eCampus** prior to your appointment.

Name: _____

UIN: _____



Coastal Environmental Science & Society | 2020-2021 Recommended

Major	Texas A&M University at Galveston Course Options					
Major Coursework	*MARS 280 MARS 491	MARS 281 OCNG 420	MARS 310 MARS 425/426 or MARB 430	MARS 350 MARS 430 or 431	MARS 481	
Supporting Coursework ⁹	ECON 202	ECON 203	POLS 347 or *MARS 432			
Professional Electives ¹⁵ <i>Select 15 hours</i>	CHEM 316 MARB 345 MARS 305 MARS 415 MARS 489	CHEM 318 MARB 350 MARS 306 *MARS 432 MARS 491	COMM 449 MARB 370 MARS 330 MARS 435	MARA 470 MARB 423 MARS 370 MARS 440	MARB 320 MARB 438 MARS 410 MARS 484	MARB 340 MARB 445 MARS 412 MARS 485

Core	Texas A&M University at Galveston Course Options					
Communication ⁶	Required: Select 1 from:	†ENGL 104 COMM 203	COMM 205	†ENGL 203	ENGL 210	
Mathematics <i>3 courses required</i>	MATH 147	MATH 150	STAT 303			
Life & Physical Sciences ²⁴ <i>All courses required</i>	PHYS 201 or 206/226 CHEM 120		BIOL 111	BIOL 112 or GEOL 106		CHEM 119
Language, Philosophy, Culture ³ <i>Select 1 course</i>	†ANTH 210 ENGL 334 HIST 242	ANTH 316 ENGL 335 *SPAN 201	*ENGL 204 *ENGL 338 *SPAN 202	*ENGL 222 *ENGL 374	*ENGL 253 *GEOG 202	ENGL 330 *GEOG 301
Creative Arts ³ <i>Select 1 course</i>	*ARTS 150 *THAR 281	ENGL 212	*ENGL 251	HISP 204	KINE 210	*MUSC 226
Social & Behavioral Science ³	*MARS 210					
American History ⁶ <i>Select 2 courses</i>	HIST 105	HIST 106	HIST 226	HIST 232		
Political Science ⁶	POLS 206	POLS 207				

University	Texas A&M University at Galveston Course Options					
Writing Intensive ⁶	MARS 430 or 431	Consult Advisor				
International and Cultural Diversity ³ <i>Select 1 course</i>	<i>Note that any * marked major or core course will concurrently fulfill both requirements</i>					
	*ARTS 150 *ENGL 374 MARB 340 MART 400 *SPAN 201	*ENGL 204 GEOG 201 MARE 400 MAST 411 *SPAN 202	*ENGL 222 *GEOG 202 MARR 400 *MUSC 226 SPAN 304	*ENGL 251 *GEOG 301 *MARS 210 NAUT 400 SPAN 412	*ENGL 253 HIST 405 *MARS 280 PSYC 107 SPMT 336	*ENGL 338 MARA 440 *MARS 432 SOCI 205 *THAR 281
Cultural Discourse ³ <i>Select 1 course</i>	<i>Note that any † marked major or core course will concurrently fulfill both requirements</i>					
	ANTH 210	†ENGL 104	ENGL 203	MARA 373	MAST 226	MAST 340
General Electives	Free electives as needed to reach 120 cumulative hours					

- Courses in this section can concurrently fulfill a Core or Major Requirement;
- Two semesters of a single foreign language is required for students who did not complete the foreign language req in high school