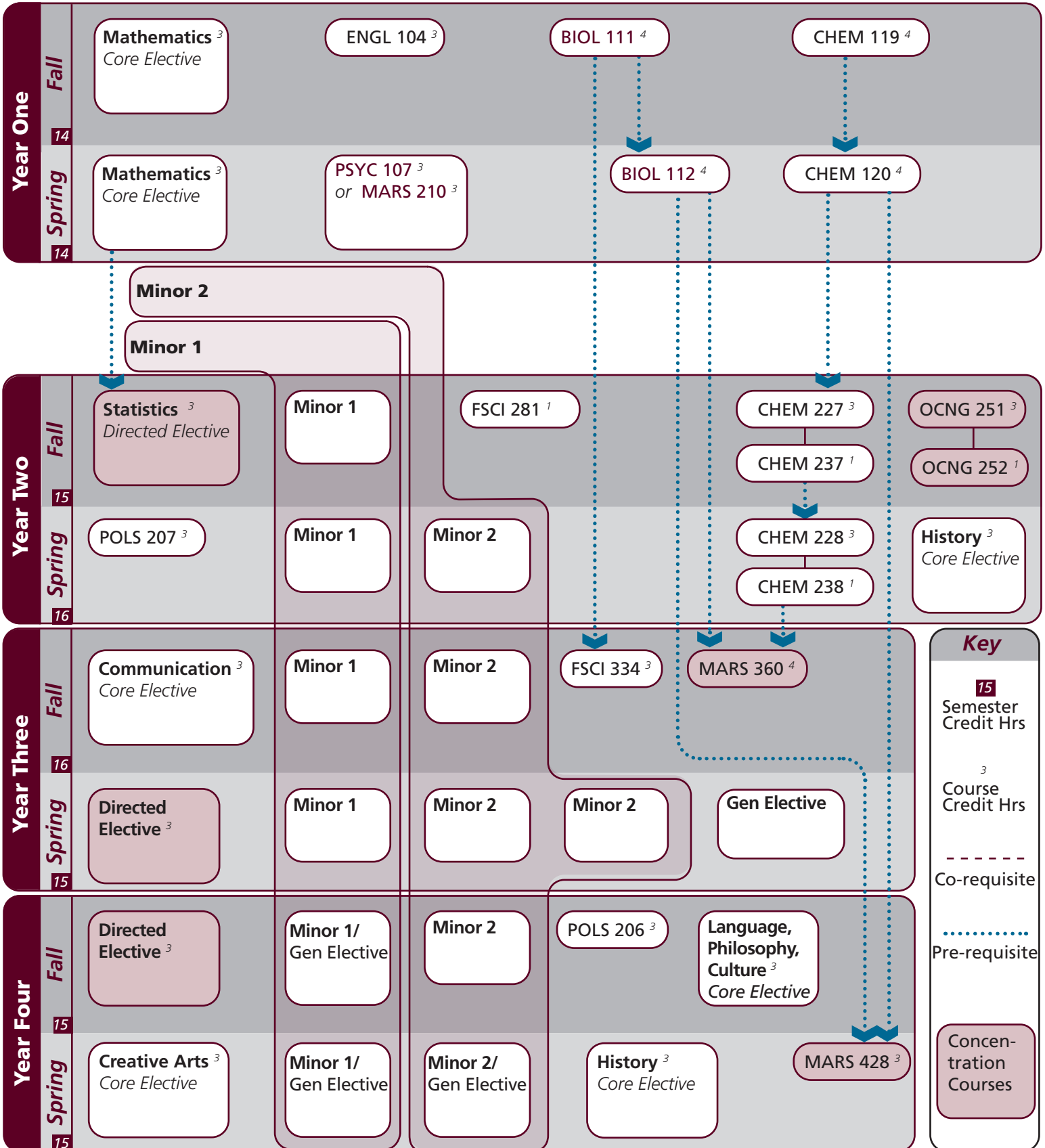


Name: \_\_\_\_\_

UIN: \_\_\_\_\_

Notes:



Notes:

Major	Texas A&M University at Galveston Course Options					
<b>Concentration Courses</b>	FSCI 281	FSCI 334	MARS 360	MARS 428	OCNG 251	OCNG 252
<b>Statistics Requirement</b> <sup>3</sup> <i>Select 1 course</i>	MARB 303	STAT 303				
<b>Directed Electives</b> <sup>6</sup> <i>Select 6 hours</i>	BIOL 351 MARB 420	CHEM 383 MARB 430	MARB 301 MARS 325	MARB 310 OCNG 420	MARB 401	MARB 414
<b>Required Minor 1</b> <sup>15-18</sup>	Course work consists of 15–18 hours with a minimum of 6 in residence at the 300–400 level. At least one of the two minors must be outside the college offering the area of concentration.					
<b>Required Minor 2</b> <sup>15-18</sup>	Course work consists of 15–18 hours with a minimum of 6 in residence at the 300–400 level. At least one of the two minors must be outside the college offering the area of concentration.					

Core	Texas A&M University at Galveston Course Options					
<b>Communication</b> <sup>6</sup> <i>2 courses required</i>	<i>Required:</i> <i>Select One:</i>	†ENGL 104 COMM 203	ENGL 203	ENGL 210		
<b>Mathematics</b> <i>Select 2 courses</i>	MATH 140 MATH 166	MATH 141 PHIL 240	MATH 142	MATH 150	MATH 151	MATH 152
<b>Life &amp; Physical Sciences</b> <sup>24</sup> <i>All courses required</i>	BIOL 111	BIOL 112	CHEM 119	CHEM 120	CHEM 227/237	CHEM 228/238
<b>Language, Philosophy, Culture</b> <sup>3</sup> <i>Select 1 course</i>	†ANTH 210 ENGL 334 HIST 242	ANTH 316 ENGL 335 *SPAN 201	*ENGL 204 *ENGL 338 *SPAN 202	*ENGL 222 *ENGL 374	*ENGL 253 *GEOG 202	ENGL 330 *GEOG 301
<b>Creative Arts</b> <sup>3</sup> <i>Select 1 course</i>	*ARTS 150	ENGL 212	*ENGL 251	HISP 204	*PERF 226	*PERF 281
<b>Social &amp; Behavioral Science</b> <sup>3</sup> <i>Select 1 course</i>	*PSYC 107	MARS 210				
<b>American History</b> <sup>6</sup> <i>Select 2 courses</i>	HIST 105	HIST 106	HIST 226	HIST 232		
<b>Political Science</b> <sup>6</sup>	POLS 206	POLS 207				

University	Texas A&M University at Galveston Course Options					
<b>Writing Intensive</b> <sup>6</sup>	Consult Advisor					
<b>International and Cultural Diversity</b> <sup>3</sup> <i>Select 1 course</i>	<i>Note that any * marked major or core course will concurrently fulfill both requirements</i>					
	*ARTS 150	*ENGL 204	*ENGL 222	*ENGL 251	*ENGL 253	*ENGL 338
	*ENGL 374	*GEOG 201	*GEOG 202	*GEOG 301	HIST 405	KINE 282
	MARA 440	*MARB 340	MARE 400	MARR 400	*MARS 210	MARS 280
	MARS 432	MART 400	MAST 411	*PERF 226	NAUT 400	*PSYC 107
	*SOCI 205	*SPAN 201	*SPAN 202	SPAN 304	SPAN 412	*SPMT 336
	*SPMT 337	*PERF 281				
<b>Cultural Discourse</b> <sup>3</sup> <i>Select 1 course</i>	<i>Note that any † marked major or core course will concurrently fulfill both requirements</i>					
	†ANTH 210	†ENGL 104	MARA 373	MAST 226	MAST 340	
<b>General Electives</b>	Free electives as needed to reach 120 cumulative hours					

- Courses in this section can concurrently fulfill a Core or Major Requirement;
- Two semesters of a single foreign language is required for students who did not complete the foreign language req in high school