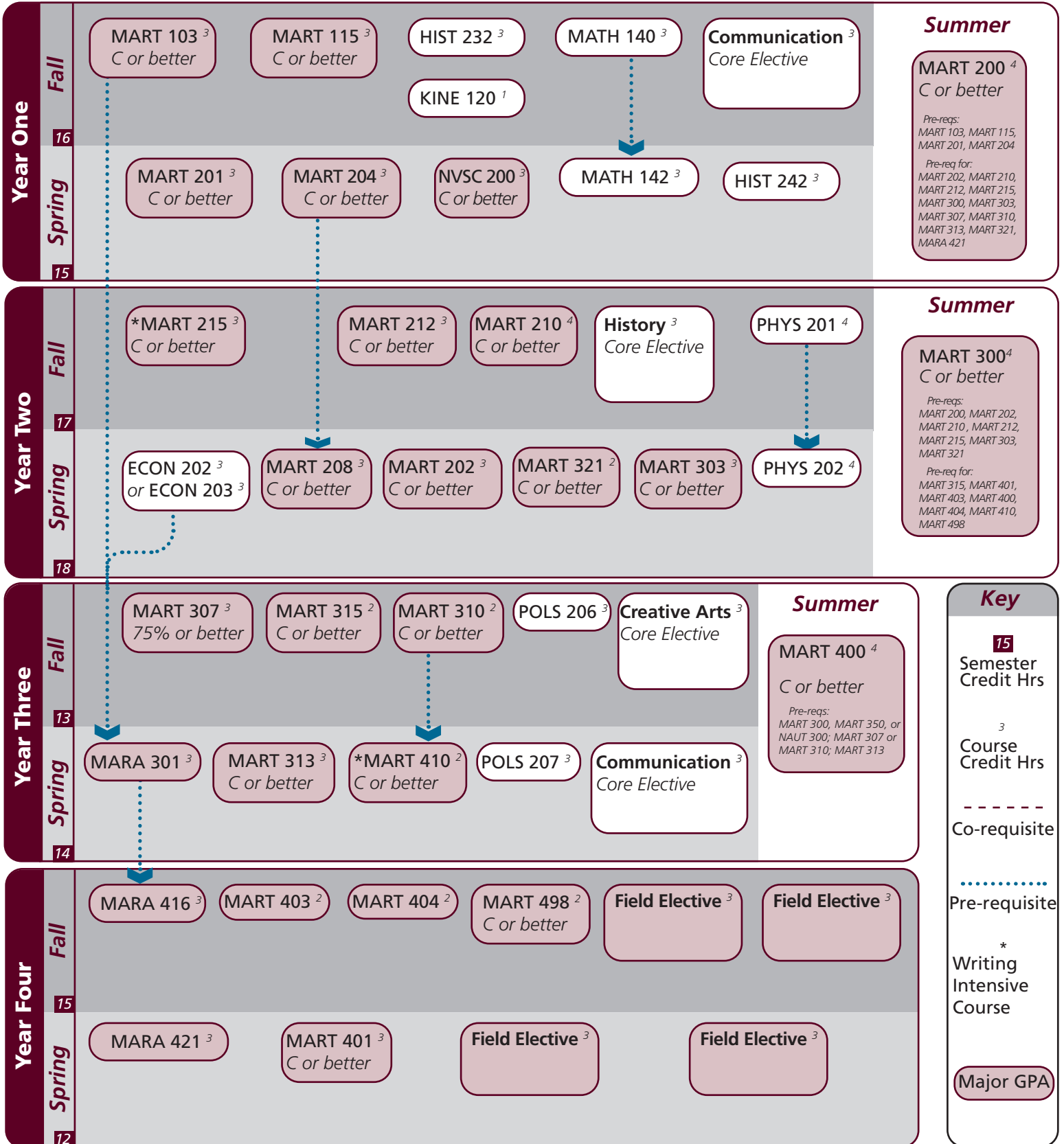


Notes:

ZOPT 100⁰
deck option

ZOPT 300⁰
deck option



Notes:

Major	TAMUG Course Options					
Major Coursework	MARA 301	MARA 416	MARA 421	^MART 103	^MART 115	^MART 200
	^MART 201	^MART 202	^MART 204	^MART 208	^MART 210	^MART 212
	^MART 215	^MART 300	^MART 303	^MART 307	^MART 310	^MART 313
	^MART 315	^MART 321	*^MART 400	^MART 401	^MART 403	^MART 404
	^MART 410	^MART 498	^NVSC 200			
Field Electives ¹² <i>Select 12 hours</i>	^ACCT 229	^MARA 304	^MARA 342	^MARA 363	^MARA 401	^MARA 402
	^MARA 424	*^MARA 440	^MARA 450	^MARA 460	^MART 205	^MART 213
	^MART 308	^MART 311	^MART 485	^MART 489		

- A cumulative 2.25 GPR must be achieved on all major requirement courses
- Courses marked with ^ require C or better

	Texas A&M University at Galveston Course Options					
Communication ⁶ <i>Select 2 courses</i>	COMM 203	COMM 205	†ENGL 104	ENGL 203	ENGL 210	
Mathematics ⁶ <i>Both courses required</i>	MATH 140	MATH 142				
Life & Physical Sciences ⁹ <i>All courses required</i>	PHYS 201	PHYS 202	KINE 120			
Language, Phil, Culture ³	HIST 242					
Creative Arts ³ <i>Select 1 course</i>	*ARTS 150	ENGL 212	*ENGL 251	HISP 204	*PERF 226	*PERF 281
Social & Behavioral Science ³	ECON 202 or 203					
American History ⁶ <i>Select 2 courses</i>	Required: Select 1:	HIST 232 HIST 105	HIST 106	HIST 226		
Political Science ⁶ <i>Both courses required</i>	POLS 206	POLS 207				

University	Texas A&M University at Galveston Course Options					
Writing Intensive ⁶	MART 215	MART 410				
International and Cultural Diversity ³ <i>Select 1 course</i>	<i>Note that any * marked major or core course will concurrently fulfill both requirements</i>					
	*ARTS 150	*ENGL 204	*ENGL 222	*ENGL 251	*ENGL 253	*ENGL 338
	*ENGL 374	*GEOG 201	*GEOG 202	*GEOG 301	HIST 405	KINE 282
	MARA 440	*MARB 340	MARE 400	MARR 400	*MARS 210	MARS 280
	MARS 432	MART 400	MAST 411	*PERF 226	NAUT 400	*PSYC 107
	*SOCI 205	*SPAN 201	*SPAN 202	SPAN 304	SPAN 412	*SPMT 336
*SPMT 337	*PERF 281					
Cultural Discourse ³ <i>Select 1 course</i>	<i>Note that any † marked major or core course will concurrently fulfill both requirements</i>					
	†ANTH 210	†ENGL 104	MARA 373	MAST 226	MAST 340	
General Electives	Free electives as needed to reach 120 cumulative hours					

- Courses in this section can concurrently fulfill a Core or Major Requirement;
- Two semesters of a single foreign language is required for students who did not complete the foreign language req in high school