

Notes:

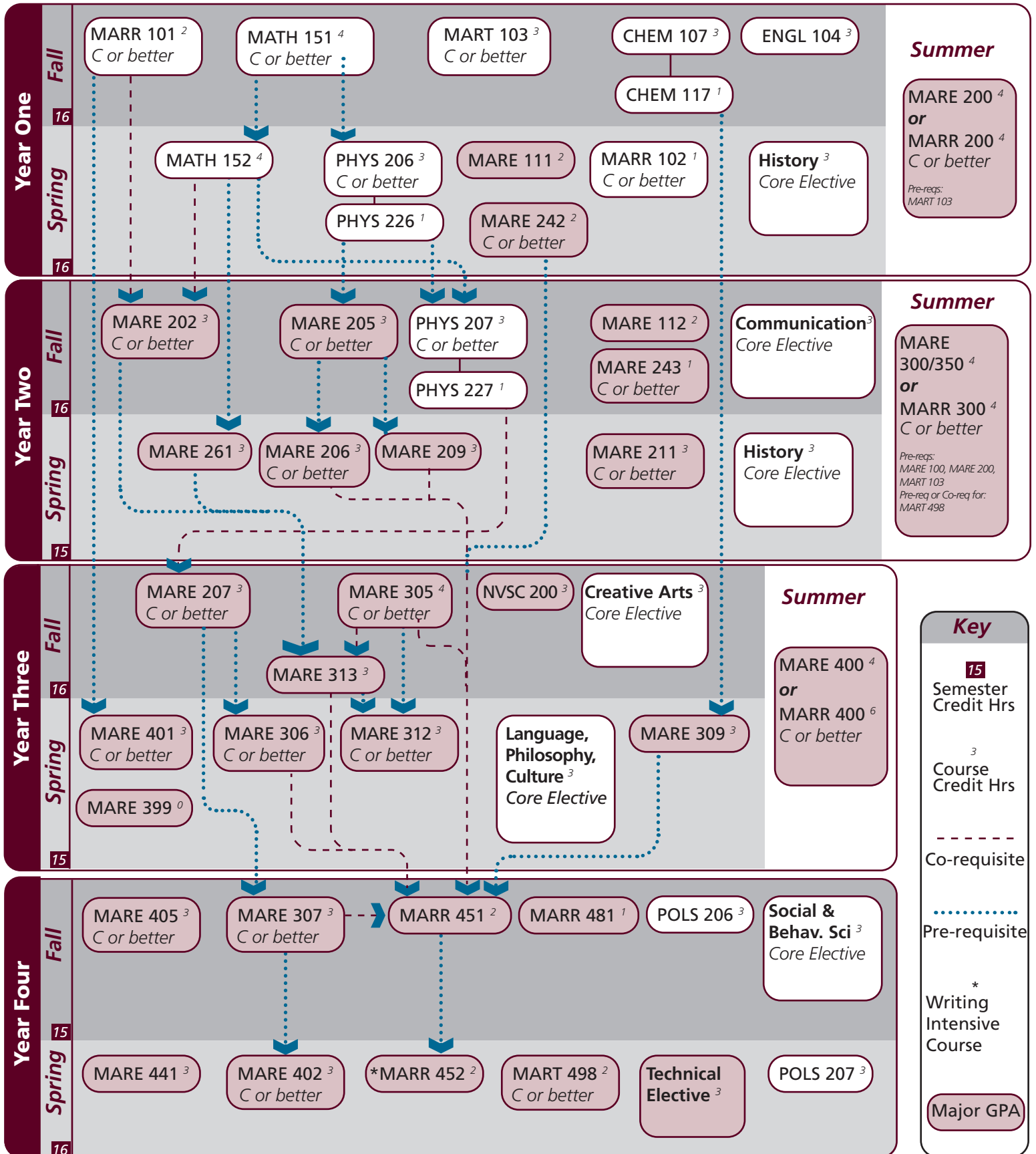
UIN: _____

Catalog information: catalog.tamu.edu

“View Degree Evaluation”: <https://howdy.tamu.edu/uPortal/f/my-record/>

ZOPT 100⁰
engine option

ZOPT 300⁰
engine option



** Technical electives may be any course with the following prefixes: MARE, MARR, MART, MARS, MASE, OCEN, CVEN, MATH, PHYS, or OCNG in consultation with advisor. At least one elective must be at the 300 or 400 level.

Notes:

Major	TAMUG Course Options					
Major Coursework	MARE 111	MARE 112	^MARE/MARR 200	^MARE 202	^MARE 205	
	^MARE 206	^MARE 207	MARE 209	^MARE 211	^MARE 242	^MARE 243
	MARE 261	^MARE/MARR 300 or MARE 350		^MARE 305	^MARE 306	^MARE 307
	MARE 309	^MARE 312	MARE 313	MARE 399	*^MARE/MARR 400	
	^MARE 401	^MARE 402	^MARE 405	MARE 441	^MARR 101	^MARR 102
	MARE 451	MARE 452	MARR 481	^MART 103	^MART 498	NVSC 200
Technical Electives ⁶ Select 6 hours	In consultation with advisor: MASE 300-499 MART 300-499		CVEN 300-400 MATH 300-499	MARE 300-499 OCEN 300-499	MARR 300-499 OCNG 300-499	MARS 300-499 PHYS 300-499

^ Requires C or better

Core	Texas A&M University at Galveston Course Options					
Communication ⁶ Select 2 courses	Required: Select 1 from:	†ENGL 104 COMM 203	COMM 205	ENGL 203	ENGL 210	
Mathematics ⁸ Both courses required	^MATH 151	MATH 152				
Life & Physical Sciences ¹² All courses required	CHEM 107	CHEM 117	^PHYS 206	PHYS 226	^PHYS 207	PHYS 227
Language, Philosophy, Culture ³ Select 1 course	†ANTH 210 ENGL 334 HIST 242	ANTH 316 ENGL 335 MAST 270	*ENGL 204 *ENGL 338 *SPAN 201	*ENGL 222 *ENGL 374 *SPAN 202	*ENGL 253 *GEOG 202	ENGL 330 *GEOG 301
Creative Arts ³ Select 1 course	*ARTS 150	ENGL 212	*ENGL 251	HISP 204	*PERF 226	*PERF 281
Social & Behavioral Science ³ Select 1 course	ANTH 202 *PSYC 107	ECON 202 *SOCI 205	ECON 203 *SPMT 336	*GEOG 201 *SPMT 337	*KINE 282	*MARS 210
American History ⁶ Select 2 courses	HIST 105	HIST 106	HIST 226	HIST 232		
Political Science ⁶ Both courses required	POLS 206	POLS 207				

University	Texas A&M University at Galveston Course Options					
Writing Intensive ⁶	MARE 405	MARE 452				
International and Cultural Diversity ³ Select 1 course	<i>Note that any * marked major or core course will concurrently fulfill both requirements</i>					
	*ARTS 150	*ENGL 204	*ENGL 222	*ENGL 251	*ENGL 253	*ENGL 338
	*ENGL 374	*GEOG 201	*GEOG 202	*GEOG 301	HIST 405	KINE 282
	MARA 440	*MARB 340	MARE 400	MARR 400	*MARS 210	MARS 280
	MARS 432	MART 400	MAST 411	*PERF 226	NAUT 400	*PSYC 107
	*SOCI 205	*SPAN 201	*SPAN 202	SPAN 304	SPAN 412	*SPMT 336
	*SPMT 337	*PERF 281				
Cultural Discourse ³ Select 1 course	<i>Note that any † marked major or core course will concurrently fulfill both requirements</i>					
	†ANTH 210	†ENGL 104	MARA 373	MAST 226	MAST 340	
General Electives	Free electives as needed to reach 120 cumulative hours					

- Courses in this section can concurrently fulfill a Core or Major Requirement;
- Two semesters of a single foreign language is required for students who did not complete the foreign language req in high school