

Coastal Environmental Science & Society | 2021-2022 Catalog

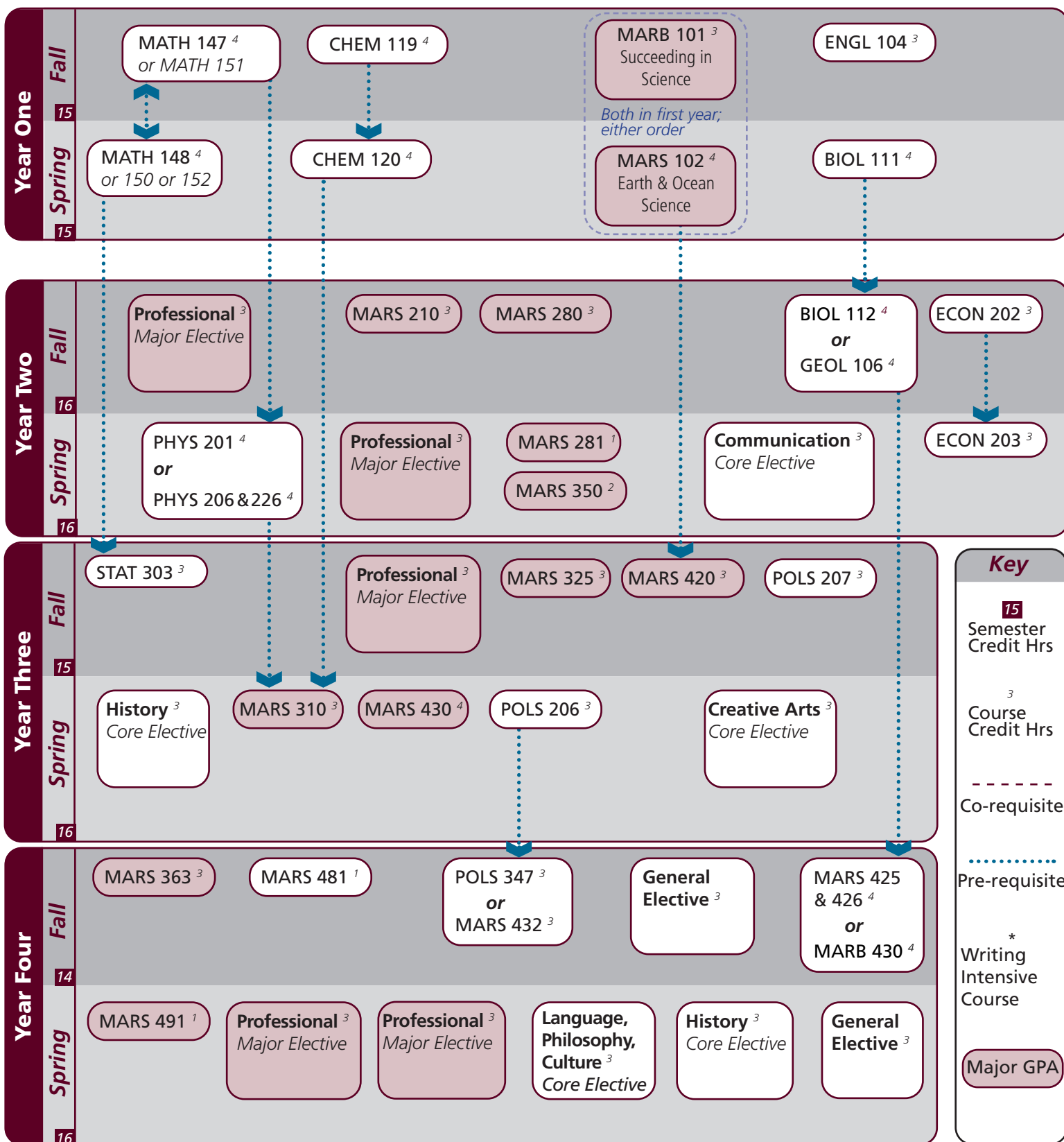
Name: _____

UIN: _____

Notes:

Catalog information: catalog.tamu.edu

“View Degree Evaluation”: <https://howdy.tamu.edu/uPortal/f/my-record/>



Coastal Environmental Science & Society | 2021-2022 Catalog

Notes:

Major	Texas A&M University at Galveston Course Options					
Major Coursework	MARB 101 MARS 481	*MARS 280 MARS 491	MARS 102 OCNG 420	MARS 310 MARS 425/426 or MARB 430	MARS 350	MARS 430 or 431
Supporting Coursework ⁹	ECON 202	ECON 203	POLS 347 or *MARS 432			
Professional Electives ¹⁵ <i>Select 15 hours</i>	CHEM 316 MARB 345 MARS 305 MARS 415 MARS 489	CHEM 318 MARB 350 MARS 306 *MARS 432 MARS 491	COMM 449 MARB 370 MARS 330 MARS 435	MARA 470 MARB 423 MARS 370 MARS 440	MARB 320 MARB 438 MARS 410 MARS 484	MARB 340 MARB 445 MARS 412 MARS 485

Core	Texas A&M University at Galveston Course Options					
Communication ⁶	Required: Select 1 from:	†ENGL 104 COMM 203	COMM 205	†ENGL 203	ENGL 210	
Mathematics <i>3 courses required</i>	MATH 147 or 151	MATH 150, 148, or 152		STAT 303		
Life & Physical Sciences ²⁴ <i>All courses required</i>	PHYS 201 or 206/226 CHEM 120	BIOL 111		BIOL 112 or GEOL 106		CHEM 119
Language, Philosophy, Culture ³ <i>Select 1 course</i>	†ANTH 210 ENGL 334 HIST 242	ANTH 316 ENGL 335 *SPAN 201	*ENGL 204 *ENGL 338 *SPAN 202	*ENGL 222 *ENGL 374	*ENGL 253 *GEOG 202	ENGL 330 *GEOG 301
Creative Arts ³ <i>Select 1 course</i>	*ARTS 150	ENGL 212	*ENGL 251	HISP 204	*PERF 226	*PERF 281
Social & Behavioral Science ³	*MARS 210					
American History ⁶ <i>Select 2 courses</i>	HIST 105	HIST 106	HIST 226	HIST 232		
Political Science ⁶	POLS 206	POLS 207				

University	Texas A&M University at Galveston Course Options					
Writing Intensive ⁶	MARS 430 or 431	Consult Advisor				
International and Cultural Diversity ³ <i>Select 1 course</i>	<i>Note that any * marked major or core course will concurrently fulfill both requirements</i>					
	*ARTS 150	*ENGL 204	*ENGL 222	*ENGL 251	*ENGL 253	*ENGL 338
	*ENGL 374	*GEOG 201	*GEOG 202	*GEOG 301	HIST 405	KINE 282
	MARA 440	*MARB 340	MARE 400	MARR 400	*MARS 210	MARS 280
	MARS 432	MART 400	MAST 411	*PERF 226	NAUT 400	*PSYC 107
	*SOCI 205	*SPAN 201	*SPAN 202	SPAN 304	SPAN 412	*SPMT 336
	*SPMT 337	*PERF 281				
Cultural Discourse ³ <i>Select 1 course</i>	<i>Note that any † marked major or core course will concurrently fulfill both requirements</i>					
	†ANTH 210	†ENGL 104	MARA 373	MAST 226	MAST 340	
General Electives	Free electives as needed to reach 120 cumulative hours					

- Courses in this section can concurrently fulfill a Core or Major Requirement;
- Two semesters of a single foreign language is required for students who did not complete the foreign language req in high school