

Notes:

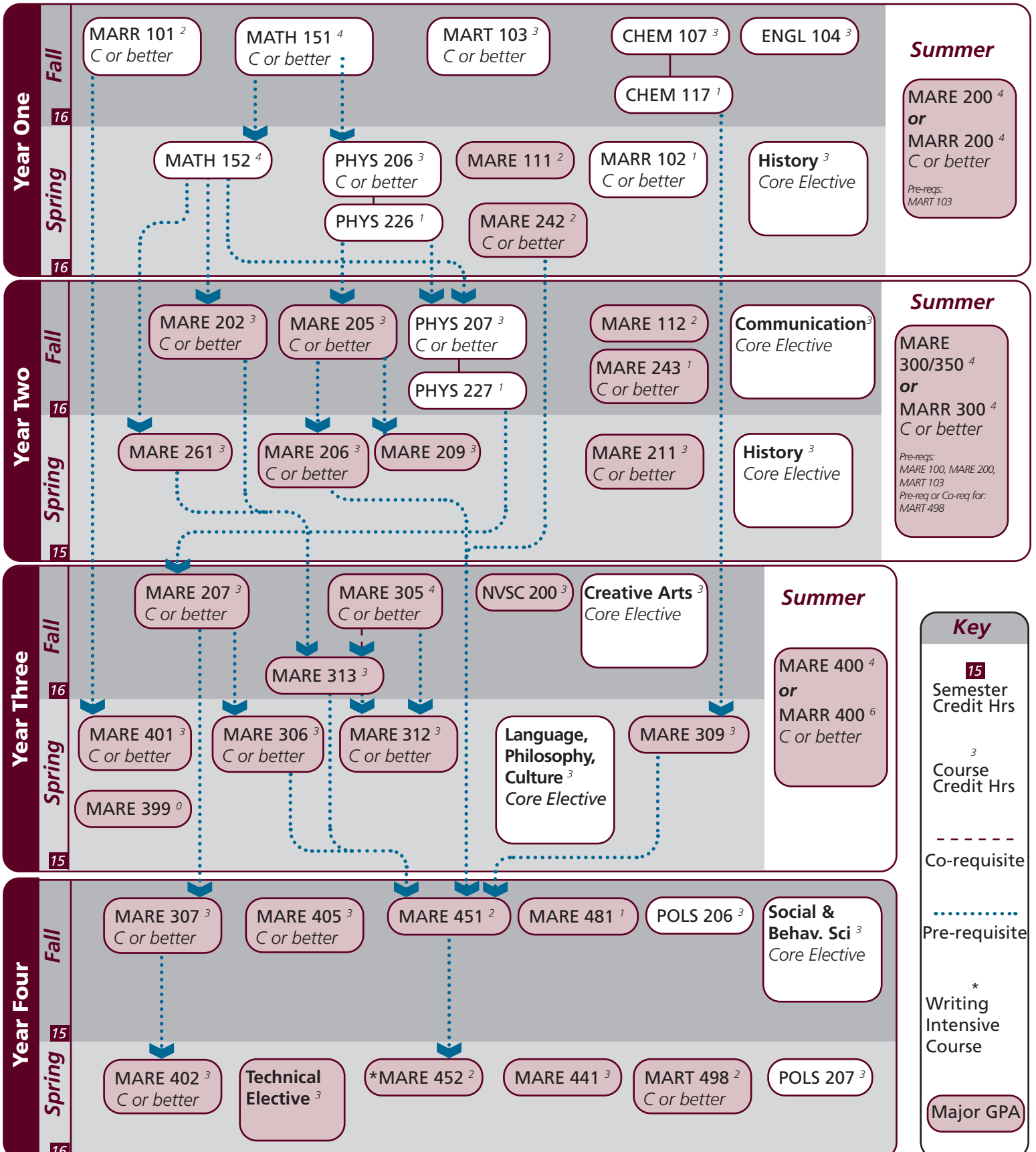
UIN: _____

Catalog information: catalog.tamu.edu

“View Degree Evaluation”: <https://howdy.tamu.edu/uPortal/f/my-record/>

ZOPT 100⁰
engine option

ZOPT 300⁰
engine option



** Technical electives may be any course with the following prefixes: MARE, MARR, MART, MARS, MASE, OCEN, CVEN, MATH, PHYS, or OCNG in consultation with advisor. At least one elective must be at the 300 or 400 level.

Notes:

Major	TAMUG Course Options					
Major Coursework	MARE 111 ^MARE 206 MARE 261 MARE 309 ^MARE 401 MARR 451	MARE 112 ^MARE 207 ^MARE/MARR 300 or MARE 350 ^MARE 312 ^MARE 402 MARR 452	^MARE/MARR 200 MARE 209 MARE 313 ^MARE 405 MARR 481	^MARE 211 ^MARE 305 MARE 399 MARE 441 ^MART 103	^MARE 202 ^MARE 242 ^MARE 306 *^MARE/MARR 400 ^MARR 101 ^MART 498	^MARE 205 ^MARE 243 ^MARE 307 ^MARR 102 NVSC 200
Technical Electives ⁶ <i>Select 6 hours</i>	In consultation with advisor: MASE 300-499 MART 300-499		CVEN 300-400 MATH 300-499	MARE 300-499 OCEN 300-499	MARR 300-499 OCNG 300-499	MARS 300-499 PHYS 300-499

^ Requires C or better

Core	Texas A&M University at Galveston Course Options					
Communication ⁶ <i>Select 2 courses</i>	Required: Select 1 from:	†ENGL 104 COMM 203	COMM 205	†ENGL 203	ENGL 210	
Mathematics ⁸ <i>Both courses required</i>	^MATH 151	MATH 152				
Life & Physical Sciences ¹² <i>All courses required</i>	CHEM 107	CHEM 117	^PHYS 206	PHYS 226	^PHYS 207	PHYS 227
Language, Philosophy, Culture ³ <i>Select 1 course</i>	†ANTH 210 ENGL 334 HIST 242	ANTH 316 ENGL 335 *SPAN 201	*ENGL 204 *ENGL 338 *SPAN 202	*ENGL 222 *ENGL 374	*ENGL 253 *GEOG 202	ENGL 330 *GEOG 301
Creative Arts ³ <i>Select 1 course</i>	*ARTS 150 *THAR 281	ENGL 212	*ENGL 251	HISP 204	KINE 210	*MUSC 226
Social & Behavioral Science ³ <i>Select 1 course</i>	ANTH 202 *SOCI 205	ECON 202 *SPMT 336	ECON 203	*GEOG 201	*MARS 210	*PSYC 107
American History ⁶ <i>Select 2 courses</i>	HIST 105	HIST 106	HIST 226	HIST 232		
Political Science ⁶ <i>Both courses required</i>	POLS 206	POLS 207				

University	Texas A&M University at Galveston Course Options					
Writing Intensive ⁶	MARE 405	MARE 452				
International and Cultural Diversity ³ <i>Select 1 course</i>	<i>Note that any * marked major or core course will concurrently fulfill both requirements</i>					
	*ARTS 150 *ENGL 374 MARB 340 *MART 400 *SPAN 201	*ENGL 204 *GEOG 201 *MARE 400 MAST 411 *SPAN 202	*ENGL 222 *GEOG 202 *MARR 400 MUSC 226 SPAN 304	*ENGL 251 *GEOG 301 *MARS 210 NAUT 400 SPAN 412	*ENGL 253 HIST 405 MARS 280 *PSYC 107 *SPMT 336	*ENGL 338 MARA 440 *MARS 432 *SOCI 205 THAR 281
Cultural Discourse ³ <i>Select 1 course</i>	<i>Note that any † marked major or core course will concurrently fulfill both requirements</i>					
	†ANTH 210	†ENGL 104	†ENGL 203	MARA 373	MAST 226	MAST 340
General Electives	Free electives as needed to reach 120 cumulative hours					

- Courses in this section can concurrently fulfill a Core or Major Requirement;
- Two semesters of a single foreign language is required for students who did not complete the foreign language req in high school