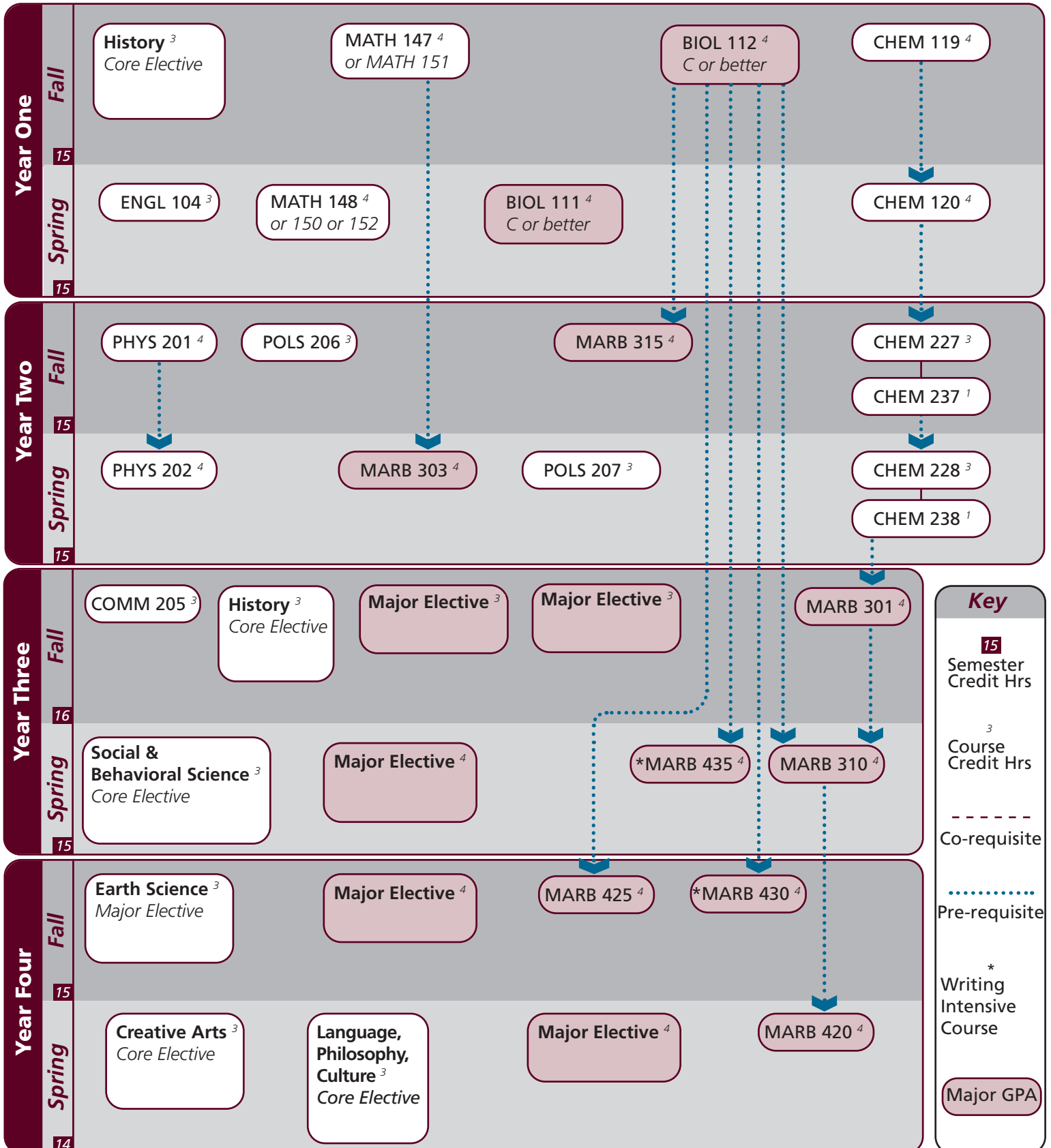


Catalog information: [catalog.tamu.edu](http://catalog.tamu.edu)

“View Degree Evaluation”: <https://howdy.tamu.edu/uPortal/f/my-record/>

Notes:



Notes:

Major	Texas A&M University at Galveston Course Options					
<b>Major Coursework</b>	^BIOL 111 MARB 420	^BIOL 112 MARB 425	MARB 101 MARB 435	MARB 303 MARB 408 or 430	MARB 310	MARB 315
<b>Earth Science Elective</b> <sup>3</sup> <i>Select 1 course</i>	GEOL 101-499; OCNG 251-499					
<b>Major Electives</b> <sup>17</sup> <i>Select 17 hours</i>	BIOL 351 MARS 360	MARB 300-499 ( <i>only up to two from 400, 401, &amp; 407</i> )			MARS 305	MARS 325

^ Requires C or better

Core	Texas A&M University at Galveston Course Options					
<b>Communication</b> <sup>6</sup> <i>Both courses required</i>	COMM 205	†ENGL 104				
<b>Mathematics</b> <sup>6</sup> <i>Both courses required</i>	MATH 147	MATH 148				
<b>Life &amp; Physical Sciences</b> <sup>24</sup> <i>All courses required</i>	CHEM 119 PHYS 201	CHEM 120 PHYS 202	CHEM 227	CHEM 237	CHEM 228	CHEM 238
<b>Language, Philosophy, Culture</b> <sup>3</sup> <i>Select 1 course</i>	†ANTH 210 ENGL 334 HIST 242	ANTH 316 ENGL 335 *SPAN 201	*ENGL 204 *ENGL 338 *SPAN 202	*ENGL 222 *ENGL 374	*ENGL 253 *GEOG 202	ENGL 330 *GEOG 301
<b>Creative Arts</b> <sup>3</sup> <i>Select 1 course</i>	*ARTS 150 *THAR 281	ENGL 212	*ENGL 251	HISP 204	KINE 210	*MUSC 226
<b>Social &amp; Behavioral Science</b> <sup>3</sup> <i>Select 1 course</i>	ANTH 202 *SOCI 205	ECON 202 *SPMT 336	ECON 203	*GEOG 201	*MARS 210	*PSYC 107
<b>American History</b> <sup>6</sup> <i>Select 2 courses</i>	HIST 105	HIST 106	HIST 226	HIST 232		
<b>Political Science</b> <sup>6</sup> <i>Both courses required</i>	POLS 206	POLS 207				

University	Texas A&M University at Galveston Course Options					
<b>Writing Intensive</b> <sup>6</sup>	MARB 430	MARB 435				
<b>International and Cultural Diversity</b> <sup>3</sup> <i>Select 1 course</i>	<i>Note that any * marked major or core course will concurrently fulfill both requirements</i>					
	*ARTS 150 *ENGL 374 *MARB 340 MART 400 *SPAN 201	*ENGL 204 *GEOG 201 MARE 400 MAST 411 *SPAN 202	*ENGL 222 *GEOG 202 MARR 400 *MUSC 226 SPAN 304	*ENGL 251 *GEOG 301 *MARS 210 NAUT 400 SPAN 412	*ENGL 253 HIST 405 MARS 280 *PSYC 107 *SPMT 336	*ENGL 338 MARA 440 MARS 432 *SOCI 205 *THAR 281
<b>Cultural Discourse</b> <sup>3</sup> <i>Select 1 course</i>	<i>Note that any † marked major or core course will concurrently fulfill both requirements</i>					
	†ANTH 210	†ENGL 104	ENGL 203	MARA 373	MAST 226	MAST 340
<b>General Electives</b>	Free electives as needed to reach 120 cumulative hours					

- Courses in this section can concurrently fulfill a Core or Major Requirement;
- Two semesters of a single foreign language is required for students who did not complete the foreign language req in high school