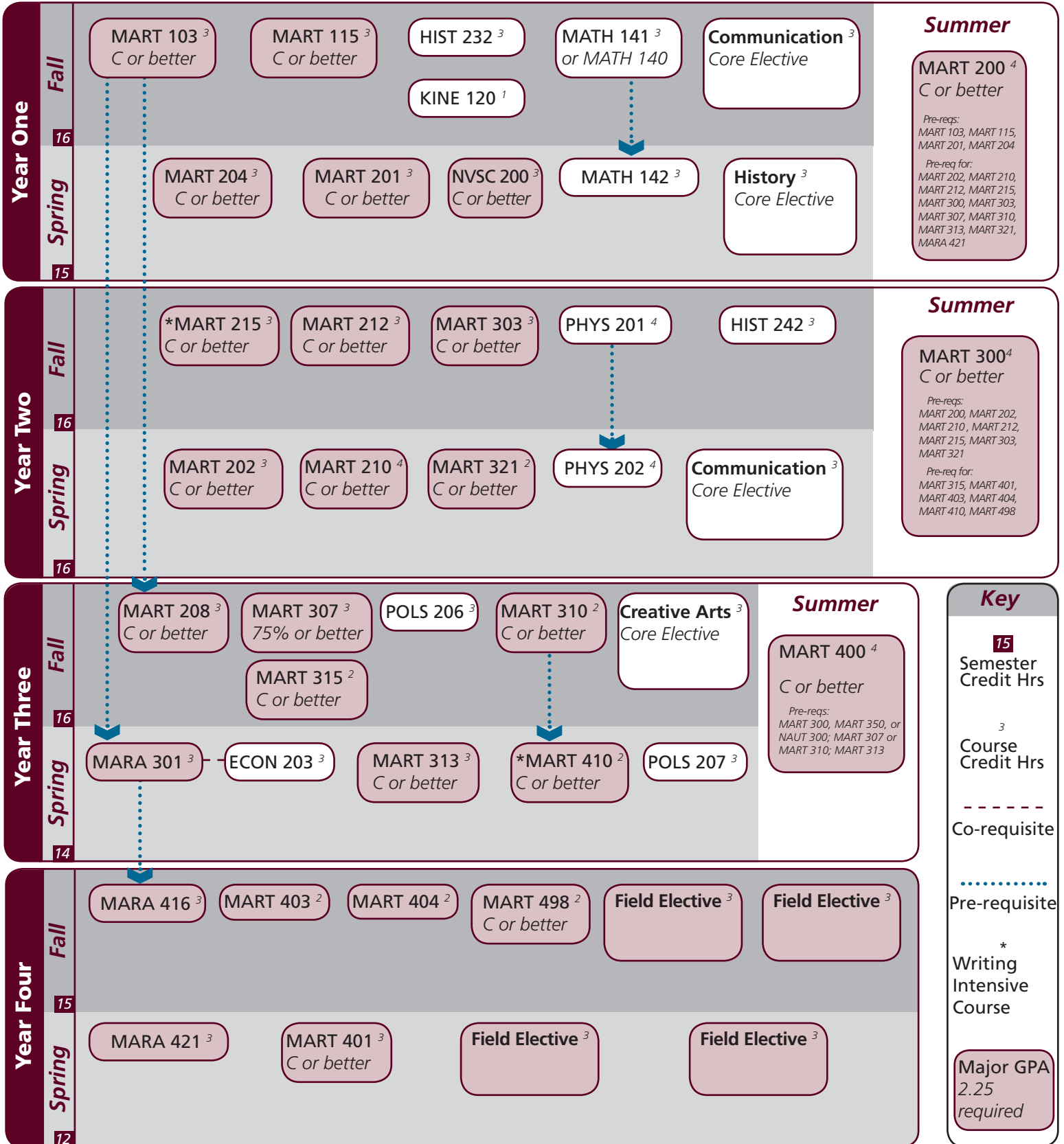


Notes:

ZOPT 100<sup>0</sup>  
deck option

ZOPT 300<sup>0</sup>  
deck option



Notes:

Major	TAMUG Course Options					
Major Coursework	MARA 301	MARA 416	MARA 421	^MART 103	^MART 115	^MART 200
	^MART 201	^MART 202	^MART 204	^MART 208	^MART 210	^MART 212
	^MART 215	^MART 300	^MART 303	^MART 307	^MART 310	^MART 313
	^MART 315	^MART 321	^MART 400	^MART 401	^MART 403	^MART 404
	^MART 410	^MART 498	^NVSC 200			
Communication <sup>12</sup> <i>Select 12 hours</i>	^ACCT 229	^MARA 304	^MARA 342	^MARA 363	^MARA 401	^MARA 402
	^MARA 424	^MARA 440	^MARA 450	^MARA 460	^MART 205	^MART 213
	^MART 308	^MART 311	^MART 485	^MART 489		

^ Requires C or better

Core	Texas A&M University at Galveston Course Options					
Communication <sup>6</sup> <i>Select 2 courses</i>	COMM 203	COMM 205	†ENGL 104	†ENGL 203	ENGL 210	
Mathematics <sup>6</sup> <i>Both courses required</i>	^MATH 142	MATH 142				
Life & Physical Sciences <sup>9</sup> <i>All courses required</i>	PHYS 201	PHYS 202	KINE 120			
Language, Phil, Culture <sup>3</sup>	HIST 242					
Creative Arts <sup>3</sup> <i>Select 1 course</i>	*ARTS 150 *THAR 281	ENGL 212	*ENGL 251	HISP 204	KINE 210	*MUSC 226
Social & Behavioral Science <sup>3</sup>	ECON 203					
American History <sup>6</sup> <i>Select 2 courses</i>	Required: Select 1:	HIST 232 HIST 105	HIST 106	HIST 226		
Political Science <sup>6</sup> <i>Both courses required</i>	POLS 206	POLS 207				

University	Texas A&M University at Galveston Course Options					
Writing Intensive <sup>6</sup>	MART 215	MART 410				
International and Cultural Diversity <sup>3</sup> <i>Select 1 course</i>	<i>Note that any * marked major or core course will concurrently fulfill both requirements</i>					
	ARTS 150	ENGL 204	ENGL 222	ENGL 251	ENGL 253	ENGL 338
	ENGL 374	GEOG 201	GEOG 202	GEOG 301	HIST 405	MARA 440
	MARB 340	MARE 400	MARR 400	MARS 210	MARS 280	MARS 432
	MART 400	MAST 411	MUSC 226	NAUT 400	PSYC 107	SOCI 205
	SPAN 201	SPAN 202	SPAN 304	SPAN 412	SPMT 336	THAR 281
Cultural Discourse <sup>3</sup> <i>Select 1 course</i>	<i>Note that any † marked major or core course will concurrently fulfill both requirements</i>					
	ANTH 210	ENGL 104	ENGL 203	MAST 226	MAST 340	
General Electives	Free electives as needed to reach 120 cumulative hours					

- Courses in this section can concurrently fulfill a Core or Major Requirement;
- Two semesters of a single foreign language is required for students who did not complete the foreign language req in high school