

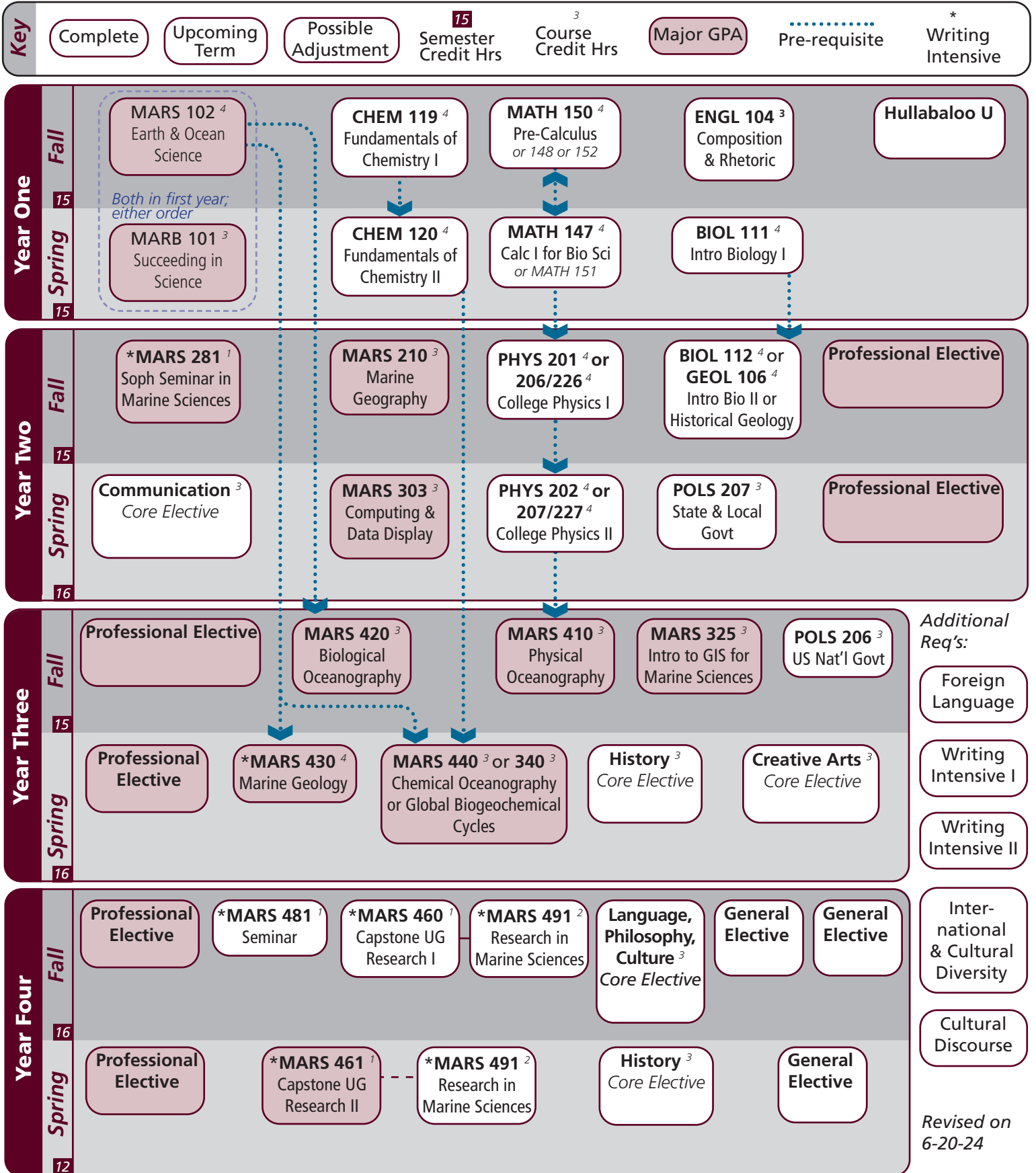
Marine Science | 2024-2025 Catalog

Name: _____

UIN: _____

Catalog information: catalog.tamu.edu

“View Degree Evaluation”: <https://howdy.tamu.edu/uPortal/f/my-record/>



Revised on 6-20-24

Marine Science | 2024-2025 Catalog

Notes:

Major	TAMUG Course Options					
Major Coursework	MARB 101 MARS 420 MARS 481	MARS 102 MARS 430 MARS 491	MARS 281 MARS 340 OR MARS 440	MARS 303	MARS 325 MARS 460	MARS 410 MARS 461
Professional Electives ¹⁸ <i>Select 18 hours</i>	ATMO 363 CHEM 318 MARS 300-499 OCEN 213	CHEM 227 FSCI 360 MATH 251 OCEN 265	CHEM 237 GEOG 331 MATH 308 OCEN 300	CHEM 228 GEOG 370 POLS 347 OCEN 311	CHEM 238 MARA 470 STAT 303	CHEM 316 MARB 300-499 OCEN 201

Core	Texas A&M University at Galveston Course Options					
Communication ⁶	Required: Select 1 from:	†ENGL 104 COMM 203	COMM 205	†ENGL 203	ENGL 210	
Mathematics ⁸	MATH 147 or 151	MATH 148, 150, or 152				
Life & Physical Sciences ²⁴ <i>All courses required</i>	BIOL 111	BIOL 112 or GEOL 106	CHEM 119		CHEM 120	
	(PHYS 201 & PHYS 202) or (PHYS 206/226 & PHYS 207/227)					
Language, Philosophy, Culture ³ <i>Select 1 course</i>	†ANTH 210 ENGL 335 HIST 242	ANTH 316 *ENGL 338 MAST 270	*ENGL 204 *ENGL 374 †PHIL 111	*ENGL 253 *GEOG 202 PHIL 251	ENGL 330 *GEOG 301	ENGL 334
Creative Arts ³ <i>Select 1 course</i>	*ARTS 150 †PERF 301	ENGL 212	*ENGL 251	HISP 204	*PERF 226	*PERF 281
Social & Behavioral Science ³	*MARS 210					
American History ⁶ <i>Select 2 courses</i>	HIST 105	HIST 106	HIST 226	HIST 232		
Political Science ⁶	POLS 206	POLS 207				

University	Texas A&M University at Galveston Course Options					
Writing Intensive ⁶ <i>Select 1 course</i>	MARS 281	MARS 430	MARS 460	MARS 461	MARS 481	MARS 491
International and Cultural Diversity ³ <i>Select 1 course</i>	<i>Note that any * marked major or core course will concurrently fulfill both requirements</i>					
	*ARTS 150 *ENGL 374 MARA 440 MART 400 *SOCI 205	*COMM 365 *GEOG 201 MARE 400 MAST 411 *SPMT 336	*ENGL 204 *GEOG 202 MARR 400 *PERF 226 *SPMT 337	*ENGL 251 *GEOG 301 *MARS 210 *PERF 281	ENGL 253 HIST 405 MARS 280 NAUT 400	*ENGL 338 *KINE 282 MARS 432 *PBSI 107
	<i>Pending final approval</i>					
Cultural Discourse ³ <i>Select 1 course</i>	<i>Note that any † marked major or core course will concurrently fulfill both requirements</i>					
	†ANTH 210 MAST 340	†ENGL 104 †PERF 301	†ENGL 203 †PHIL 111	FSCI 334	MARA 373	MAST 226
General Electives	Free electives as needed to reach 120 cumulative hours					

- Courses in this section can concurrently fulfill a Core or Major Requirement;
- Two semesters of a single foreign language is required for students who did not complete the foreign language req in high school