

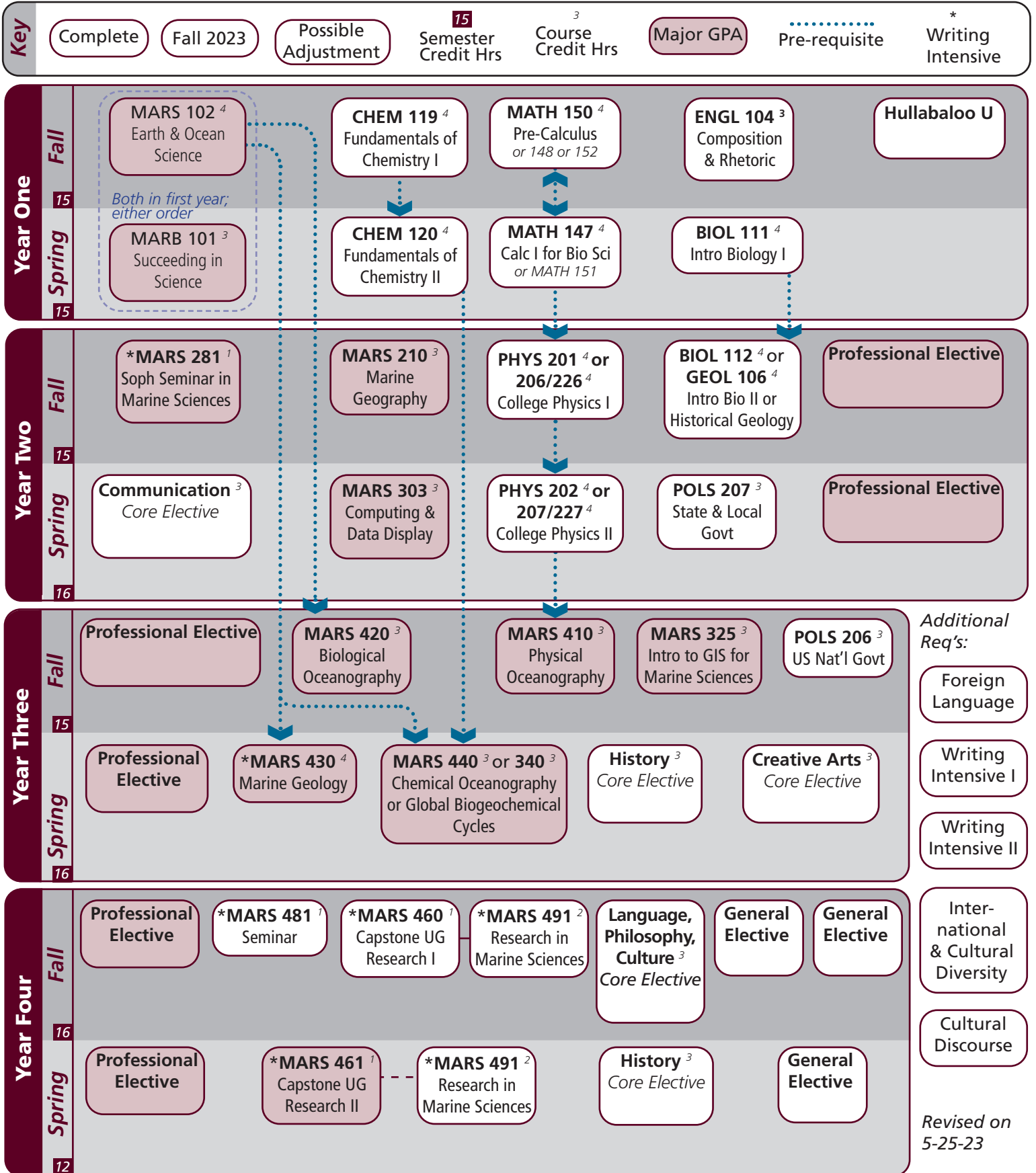
# Marine Science | 2023-2024 Catalog

Name: \_\_\_\_\_

UIN: \_\_\_\_\_

Catalog information: [catalog.tamu.edu](http://catalog.tamu.edu)

“View Degree Evaluation”: <https://howdy.tamu.edu/uPortal/f/my-record/>



Revised on 5-25-23

# Marine Science | 2023-2024 Catalog

Notes:

Major	TAMUG Course Options					
<b>Major Coursework</b>	MARB 101 MARS 420 MARS 481	MARS 102 MARS 430 MARS 491	MARS 281 MARS 340 OR MARS 440	MARS 303	MARS 325 MARS 460	MARS 410 MARS 461
<b>Professional Electives</b> <sup>18</sup> <i>Select 18 hours</i>	ATMO 363 CHEM 318 MARS 305 MARS 408 <i>*MARS 432</i> MARS 491 OCEN 213	CHEM 227 FSCI 360 MARS 306 MARS 410 MARS 435 MATH 251 OCEN 265	CHEM 237 GEOG 331 MARS 330 MARS 412 MARS 440 MATH 308 OCEN 300	CHEM 228 MARA 470 MARS 340 MARS 415 MARS 470 POLS 347 OCEN 311	CHEM 238 MARB 300-499 MARS 370/GEOG 370 MARS 425 MARS 484 STAT 303	CHEM 316 MARS 303 MARS 426 MARS 489 OCEN 201

Core	Texas A&M University at Galveston Course Options					
<b>Communication</b> <sup>6</sup>	Required: Select 1 from:	†ENGL 104 COMM 203	COMM 205	†ENGL 203	ENGL 210	
<b>Mathematics</b> <sup>8</sup>	MATH 147 or 151	MATH 148, 150, or 152				
<b>Life &amp; Physical Sciences</b> <sup>24</sup> <i>All courses required</i>	BIOL 111 (PHYS 201 & PHYS 202) or (PHYS 206/226 & PHYS 207/227)	BIOL 112 or GEOL 106	CHEM 119	CHEM 120		
<b>Language, Philosophy, Culture</b> <sup>3</sup> <i>Select 1 course</i>	†ANTH 210 ENGL 335 HIST 242	ANTH 316 *ENGL 338 MAST 270	*ENGL 204 *ENGL 374 †PHIL 111	*ENGL 253 *GEOG 202 PHIL 251	ENGL 330 *GEOG 301	ENGL 334
<b>Creative Arts</b> <sup>3</sup> <i>Select 1 course</i>	*ARTS 150 †PERF 301	ENGL 212	*ENGL 251	HISP 204	*PERF 226	*PERF 281
<b>Social &amp; Behavioral Science</b> <sup>3</sup>	*MARS 210					
<b>American History</b> <sup>6</sup> <i>Select 2 courses</i>	HIST 105	HIST 106	HIST 226	HIST 232		
<b>Political Science</b> <sup>6</sup>	POLS 206	POLS 207				

University	Texas A&M University at Galveston Course Options					
<b>Writing Intensive</b> <sup>6</sup>	MARS 281	MARS 430	MARS 460	MARS 461	MARS 481	MARS 491
<b>International and Cultural Diversity</b> <sup>3</sup> <i>Select 1 course</i>	<i>Note that any * marked major or core course will concurrently fulfill both requirements</i>					
	*ARTS 150 *ENGL 374 MARA 440 <i>*MART 400</i> SOCI 205	<i>COMM 365</i> GEOG 201 <i>MARE 400</i> MAST 411 SPMT 336	*ENGL 204 *GEOG 202 <i>MARR 400</i> *PERF 226 SPMT 337	*ENGL 251 *GEOG 301 <i>MARR 400</i> *PERF 281	<i>*ENGL 253</i> <i>HIST 405</i> <i>MARS 280</i> <i>*NAUT 400</i>	*ENGL 338 KINE 282 <i>MARS 432</i> PBSI 107
<b>Cultural Discourse</b> <sup>3</sup> <i>Select 1 course</i>	<i>Note that any † marked major or core course will concurrently fulfill both requirements</i>					
	†ANTH 210 MAST 340	†ENGL 104 †PERF 301	†ENGL 203 †PHIL 111	FSCI 334	MARA 373	MAST 226
<b>General Electives</b>	Free electives as needed to reach 120 cumulative hours					

- Courses in this section can concurrently fulfill a Core or Major Requirement;
- Two semesters of a single foreign language is required for students who did not complete the foreign language req in high school