

Marine Biology - LO | 2023-2024 Catalog

Name: _____

UIN: _____

Catalog information: catalog.tamu.edu

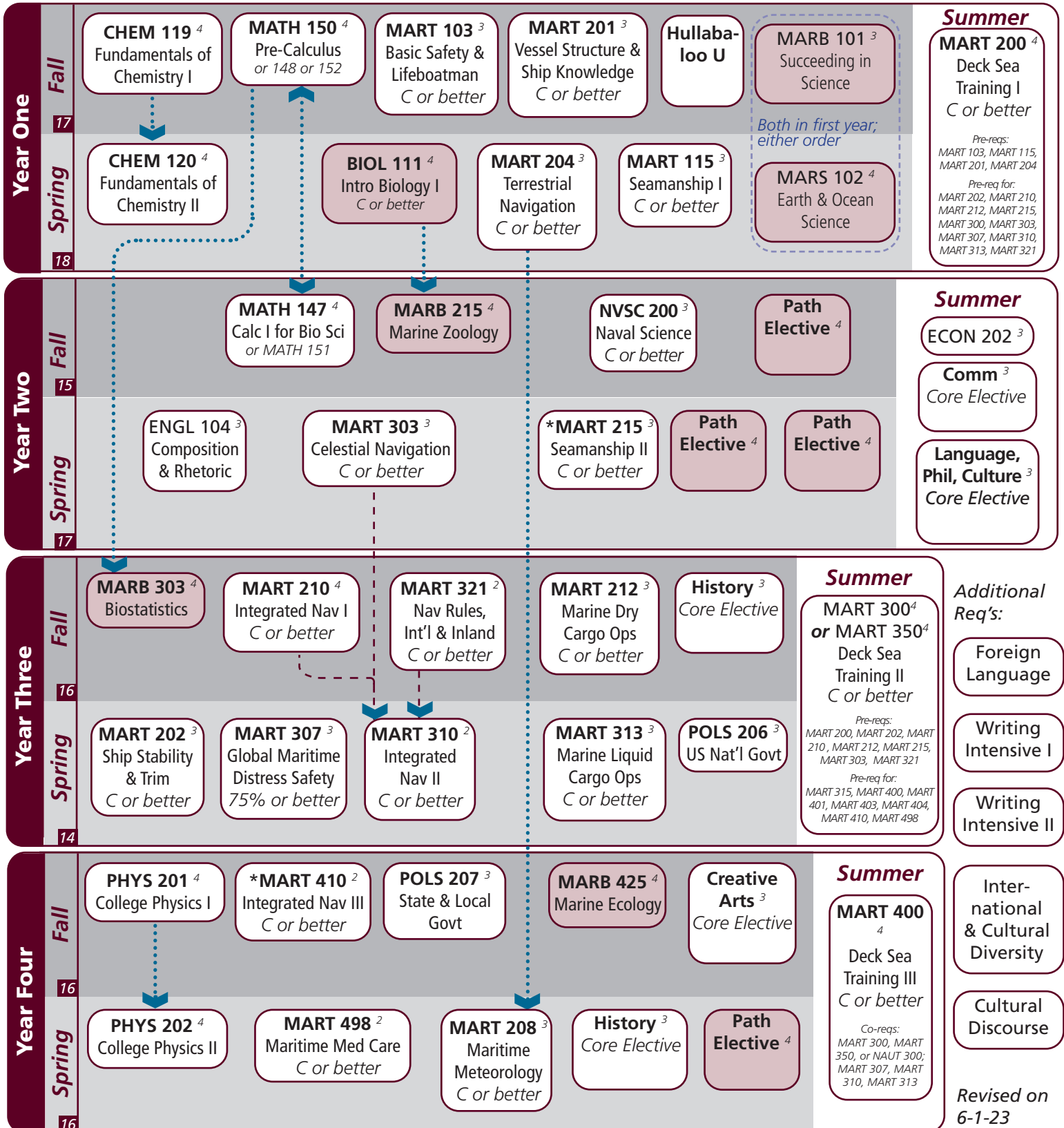
“View Degree Evaluation”: <https://howdy.tamu.edu/uPortal/f/my-record/>

**Every Fall
& Spring:**

ZOPT 100⁰
CORPS

ZOPT 300⁰
deck option

Key	Complete	Fall 2023	Possible Adjustment	¹⁵ Semester Credit Hrs	³ Course Credit Hrs	Major GPA	Pre-requisite	* Writing Intensive
-----	----------	-----------	---------------------	--------------------------------------	-----------------------------------	-----------	---------------	------------------------



Marine Biology - License Option | 2023-2024 Catalog | Major Guide

Notes:

Major	Texas A&M University at Galveston Course Options					
Major Coursework	BIOL 111	MARB 101	MARB 215	MARB 303	MARB 425	MARS 102
License Courses	^MART 103 ^MART 208 ^MART 303 ^MART 410	^MART 115 ^MART 210 ^MART 307 ^MART 498	^MART 200 ^MART 212 ^MART 310 ^NVSC 200	^MART 201 ^MART 215 ^MART 313	^MART 202 ^MART 300 or 350 ^MART 321	^MART 204 <i>*MART 400</i>
Path Electives	Ecology Track: Required: MARB 360 Select 2: MARB 311		MARB 430 MARB 315	MARB 435		
	Molecular Track: Required: CHEM 227 & 237 Select 1: MARB 311		CHEM 228 & 238 MARB 315	MARB 435	MARB 310	

^ Requires C or better

Core	Texas A&M University at Galveston Course Options					
Communication ⁶	Required: Select 1 from:	†ENGL 104 COMM 203	COMM 205	†ENGL 203	ENGL 210	
Mathematics ⁶	MATH 147 or 151		MATH 148, 150, or 152			
Life & Physical Sciences ¹⁶ <i>All courses required</i>	CHEM 119	CHEM 120	PHYS 201	PHYS 202		
Language, Philosophy, Culture ³ <i>Select 1 course</i>	†ANTH 210 ENGL 335 HIST 242	ANTH 316 *ENGL 338 MAST 270	*ENGL 204 *ENGL 374 †PHIL 111	<i>*ENGL 253</i> *GEOG 202 PHIL 251	ENGL 330 *GEOG 301	ENGL 334
Creative Arts ³ <i>Select 1 course</i>	*ARTS 150 †PERF 301	ENGL 212	*ENGL 251	HISP 204	*PERF 226	*PERF 281
Social & Behavioral Science ³	ECON 202					
American History ⁶ <i>Select 2 courses</i>	HIST 105	HIST 106	HIST 226	HIST 232		
Political Science ⁶	POLS 206	POLS 207				

University	Texas A&M University at Galveston Course Options					
Writing Intensive ⁶	MARS 215	MART 410				
International and Cultural Diversity ³ <i>Select 1 course</i>	<i>Note that any * marked major or core course will concurrently fulfill both requirements</i>					
	*ARTS 150 *ENGL 374 MARA 440 <i>*MART 400</i> SOCI 205	<i>COMM 365</i> GEOG 201 <i>MARE 400</i> MAST 411 SPMT 336	*ENGL 204 *GEOG 202 <i>MARR 400</i> *PERF 226 SPMT 337	*ENGL 251 *GEOG 301 MARS 210 *PERF 281	<i>*ENGL 253</i> <i>HIST 405</i> <i>MARS 280</i> <i>*NAUT 400</i>	*ENGL 338 KINE 282 <i>MARS 432</i> PBSI 107
Cultural Discourse ³ <i>Select 1 course</i>	<i>Note that any † marked major or core course will concurrently fulfill both requirements</i>					
	†ANTH 210 MAST 340	†ENGL 104 †PERF 301	†ENGL 203 †PHIL 111	FSCI 334	MARA 373	MAST 226
General Electives	Free electives as needed to reach 120 cumulative hours					

- Courses in this section can concurrently fulfill a Core or Major Requirement;
- Two semesters of a single foreign language is required for students who did not complete the foreign language req in high school