

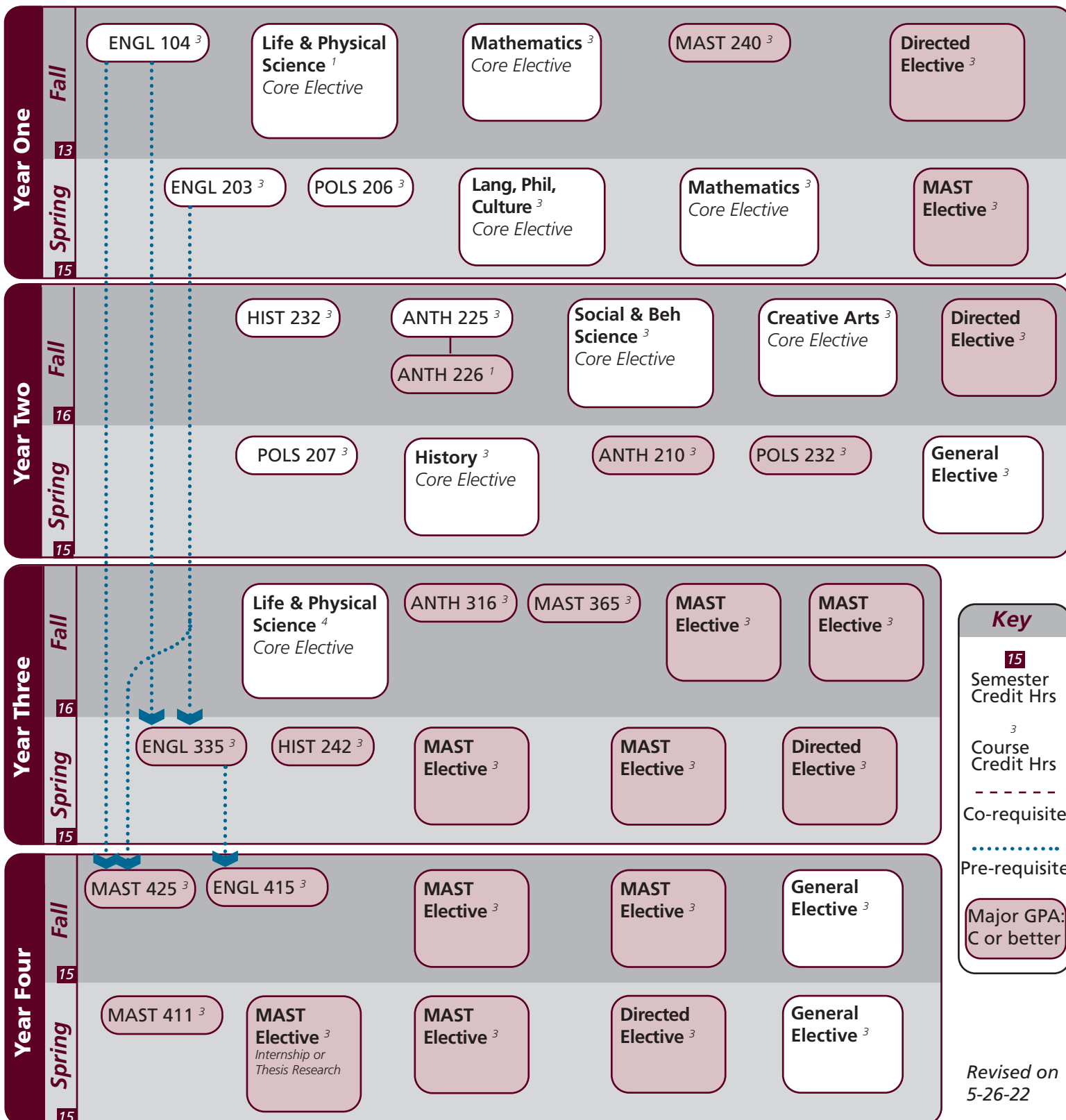
Name: _____

UIN: _____

Catalog information: catalog.tamu.edu

“View Degree Evaluation”: <https://howdy.tamu.edu/uPortal/f/my-record/>

Notes:



Key

- 15** Semester Credit Hrs
- 3** Course Credit Hrs
- Co-requisite
- Pre-requisite
- Major GPA: C or better

Revised on 5-26-22

NSC Check-out

I understand that the courses indicated on this guide are those my advisor recommends. I acknowledge that if I make changes without consulting my advisor, I risk taking courses that will not count toward my degree, not count toward financial aid, and/or could delay progress to degree.

Signature: _____

Major	Texas A&M University at Galveston Course Options					
^Major Coursework	†ANTH 210 MAST 365	ANTH 316 *MAST 411	ENGL 335 MAST 425	ENGL 415 POLS 232	HIST 242	MAST 240
^MAST Electives ²⁷ <i>Select 27 hours</i>	ANTH 318 MAST 200-499 (except 365, 480,481)	ANTH 330 ANTH 484 (481)	ANTH 351 PHIL 314	ANTH 484 *POLS 231	CLAS 371 POLS 347	Max 6 hrs of 484/485/491
Directed Electives ¹² <i>Select 12 hours</i>	ANTH 202 COMM 203 *ENGL 374 HIST 374 MARA 435 *SPAN 201	ANTH 313 *COMM 365 ENGL 484 *HIST 405 MARA 470 *SPAN 202	ANTH 350 ENGL 330 ENGL 485 HIST 485 POLS 353 Max 3 hrs of KINE 199, MAST 484 or 485	ANTH 409 ENGL 334 HIST 226 KINE 199 *POLS 366	ANTH 423 *ENGL 338 HIST 370 MARA 212 SPAN 101	ANTH 485 *ENGL 339 HIST 373 MARA 421 SPAN 102

^ Requires C or better

Core	Texas A&M University at Galveston Course Options						
Communication ⁶	†ENGL 104	ENGL 203					
Mathematics ⁶ <i>Select 2 courses</i>	MATH 140 MATH 151	MATH 141 MATH 152	MATH 142 PHIL 240	MATH 147	MATH 148	MATH 150	
Life & Physical Sciences ⁹ <i>Select 9 hours</i>	<i>Required: 5 hrs from:</i>		ANTH 225 BIOL 111 CHEM 117 KINE 120 PHYS 201	ANTH 226 BIOL 112 CHEM 120 MARS 102 PHYS 206	CHEM 106 GEOL 101 OCNG 251 PHYS 207	CHEM 107 GEOL 102 OCNG 252 PHYS 226	CHEM 116 GEOL 106 PHYS 123 PHYS 227
Language, Philosophy, Culture ³ <i>Select 1 course</i>	†ANTH 210 ENGL 334 HIST 242	ANTH 316 ENGL 335 MAST 270	*ENGL 204 *ENGL 338 †PHIL 111	*ENGL 222 *ENGL 374 PHIL 251	*ENGL 253 *GEOG 202	ENGL 330 *GEOG 301	
Creative Arts ³ <i>Select 1 course</i>	*ARTS 150 †PERF 301	ENGL 212	*ENGL 251	HISP 204	*PERF 226	*PERF 281	
Social & Behavioral Science ³ <i>Select 1 course</i>	ANTH 202 *MARS 210	*COMM 365 *PBSI 107	ECON 202 *SOCL 205	ECON 203 *SPMT 336	*GEOG 201 *SPMT 337	*KINE 282	
American History ⁶ <i>Select 2 courses</i>	<i>Required: 1 course from:</i>		HIST 232 HIST 105	HIST 106	HIST 226		
Political Science ⁶	POLS 206	POLS 207					

University	Texas A&M University at Galveston Course Options					
Writing Intensive ⁶	Consult Advisor					
International and Cultural Diversity ³ <i>Select 1 course</i>	<i>Note that any * marked major or core course will concurrently fulfill both requirements</i>					
	*ARTS 150 *ENGL 374 MARA 440 MART 400 SOC 205	COMM 365 GEOG 201 MARE 400 MAST 411 SPMT 336	*ENGL 204 *GEOG 202 MARR 400 *PERF 226 SPMT 337	*ENGL 251 *GEOG 301 *MARS 210 *PERF 281	*ENGL 253 HIST 405 *MARS 280 NAUT 400 (Pending final approval)	*ENGL 338 KINE 282 *MARS 432 PBSI 107
Cultural Discourse ³ <i>Select 1 course</i>	<i>Note that any † marked major or core course will concurrently fulfill both requirements</i>					
	†ANTH 210 MAST 340	†ENGL 104 †PERF 301	†ENGL 203 †PHIL 111	FSCI 334	MARA 373	MAST 226
General Electives	Free electives as needed to reach 120 cumulative hours					

- Courses in this section can concurrently fulfill a Core or Major Requirement;
- Two semesters of a single foreign language is required for students who did not complete the foreign language req in high school