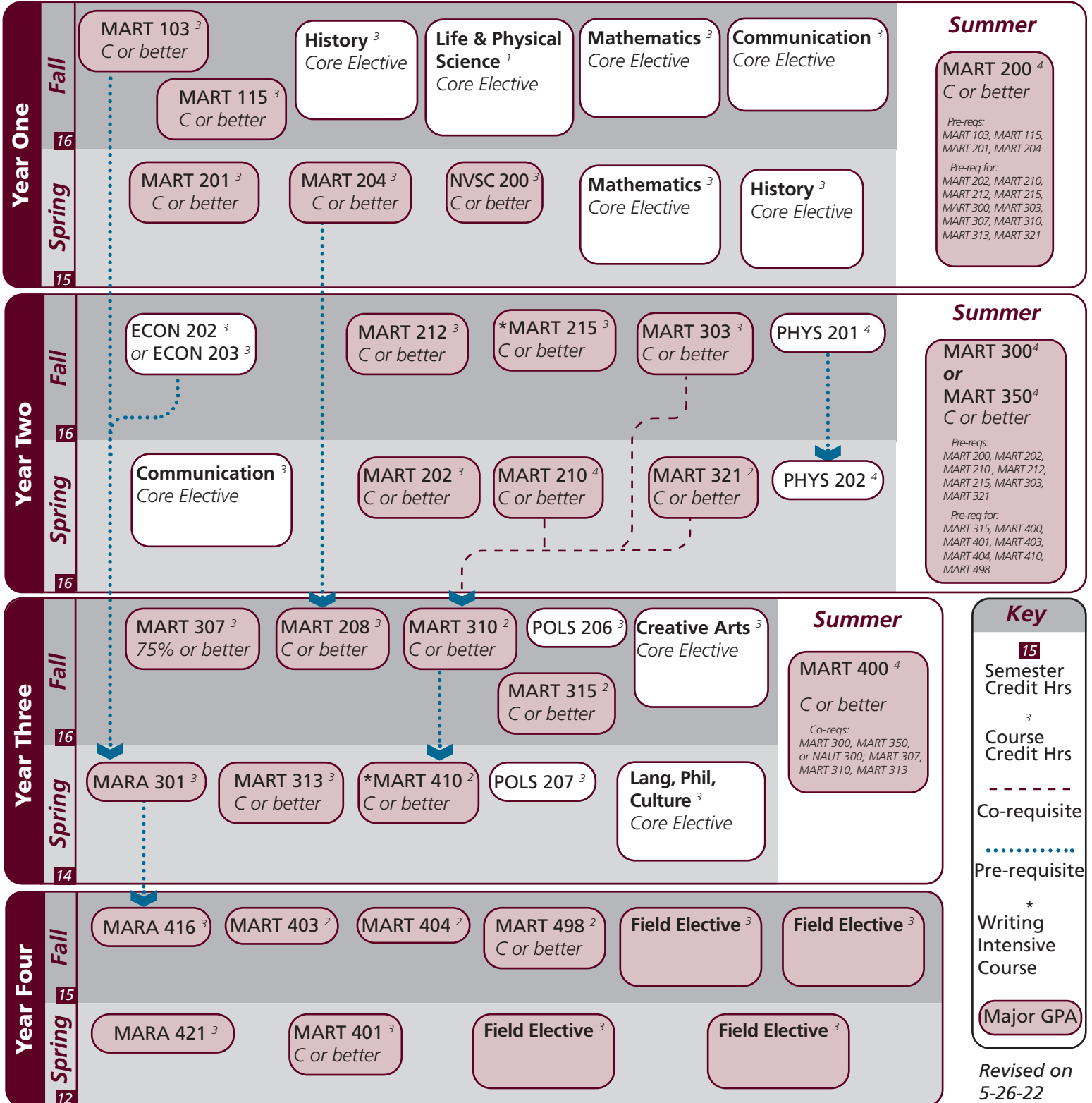


Notes:

ZOPT 100<sup>0</sup>  
CORPS

ZOPT 300<sup>0</sup>  
deck option



**NSC Check-out**

I understand that the courses indicated on this guide are those my advisor recommends. I acknowledge that if I make changes without consulting my advisor, I risk taking courses that will not count toward my degree, not count toward financial aid, and/or could delay progress to degree.

Signature: \_\_\_\_\_

# Marine Transportation | 2022-2023 Catalog | Major Guide

Notes:

Major	TAMUG Course Options					
<b>Major Coursework</b>	MARA 301	MARA 416	MARA 421	^MART 103	^MART 115	^MART 200
	^MART 201	^MART 202	^MART 204	^MART 208	^MART 210	^MART 212
	^MART 215	^MART 300 or ^MART 350		^MART 303	^MART 307	^MART 310
	^MART 313	^MART 315	^MART 321	*^MART 400	^MART 401	^MART 403
	^MART 404	^MART 410	^MART 498	^NVSC 200		
<b>Field Electives</b> <sup>12</sup> <i>Select 12 hours</i>	^ACCT 229	^MARA 304	^MARA 342	^MARA 363	^MARA 401	^MARA 402
	^MARA 424	*^MARA 440	^MARA 450	^MART 205	^MART 213	^MART 308
	^MART 311	^MART 485	^MART 489			

- A cumulative 2.25 GPR must be achieved on all major requirement courses
- Courses marked with ^ require C or better

Core	Texas A&M University at Galveston Course Options					
<b>Communication</b> <sup>6</sup> <i>Select 2 courses</i>	Required:	†ENGL 104				
	Select 1 from:	COMM 203	COMM 205	†ENGL 203	ENGL 210	
<b>Mathematics</b> <sup>6</sup> <i>Select 2 Courses</i>	MATH 140	MATH 142	MATH 147	MATH 148	MATH 150	MATH 151
	MATH 152	PHIL 240				
<b>Life &amp; Physical Sciences</b> <sup>9</sup> <i>All courses required</i>	PHYS 201	PHYS 202	KINE 120 or transferred science			
<b>Language, Philosophy, Culture</b> <sup>3</sup> <i>Select 1 course</i>	†ANTH 210	ANTH 316	*ENGL 204	*ENGL 253	ENGL 330	ENGL 334
	ENGL 335	*ENGL 338	*ENGL 374	*GEOG 202	*GEOG 301	
	HIST 242	MAST 270	†PHIL 111	PHIL 251		
<b>Creative Arts</b> <sup>3</sup> <i>Select 1 course</i>	*ARTS 150	ENGL 212	*ENGL 251	HISP 204	*PERF 226	*PERF 281
	†PERF 301					
<b>Social &amp; Behavioral Science</b> <sup>3</sup> <i>Select 1 course</i>	ECON 202 or ECON 203					
<b>American History</b> <sup>6</sup> <i>Select 2 courses</i>	HIST 105	HIST 106	HIST 226	HIST 232		
<b>Political Science</b> <sup>6</sup> <i>Both courses required</i>	POLS 206	POLS 207				

University						
<b>Writing Intensive</b> <sup>6</sup>	MART 215	MART 410				
<b>International and Cultural Diversity</b> <sup>3</sup> <i>Select 1 course</i>	<i>Note that any * marked major or core course will concurrently fulfill both requirements</i>					
	*ARTS 150	COMM 365	*ENGL 204	*ENGL 251	*ENGL 253	*ENGL 338
	*ENGL 374	GEOG 201	*GEOG 202	*GEOG 301	HIST 405	KINE 282
	MARA 440	MARE 400	MARR 400	MARS 210	MARS 280	MARS 432
	*MART 400	MAST 411	*PERF 226	*PERF 281	*NAUT 400	PBSI 107
	SOCI 205	SPMT 336	SPMT 337			
<b>Cultural Discourse</b> <sup>3</sup> <i>Select 1 course</i>	<i>Note that any † marked major or core course will concurrently fulfill both requirements</i>					
	†ANTH 210	†ENGL 104	†ENGL 203	FSCI 334	MARA 373	MAST 226
	MAST 340	†PERF 301	†PHIL 111			
<b>General Electives</b>	Free electives as needed to reach 120 cumulative hours					

- Courses in this section can concurrently fulfill a Core or Major Requirement;
- Two semesters of a single foreign language is required for students who did not complete the foreign language req in high school