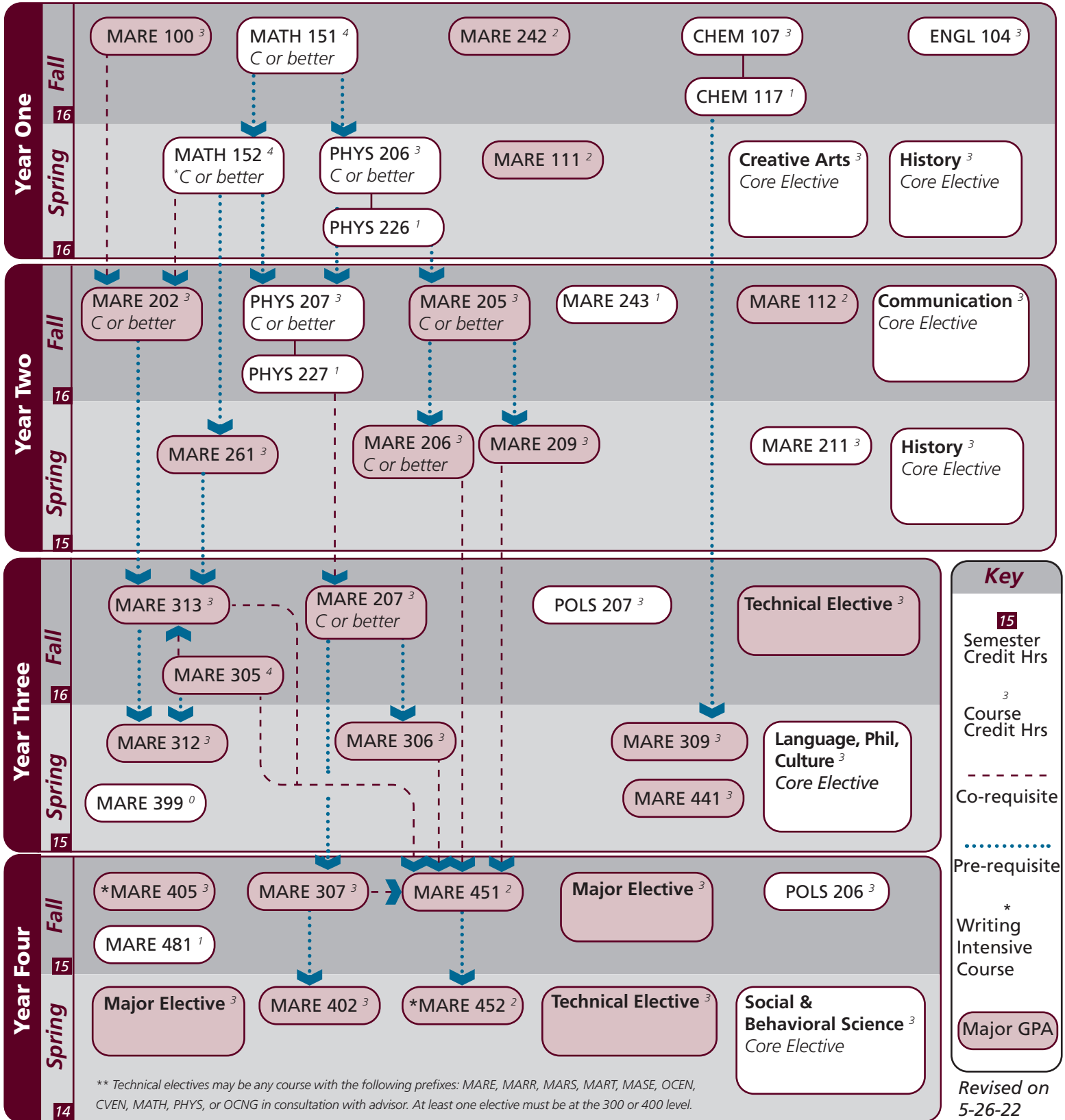


Catalog information: [catalog.tamu.edu](http://catalog.tamu.edu)

“View Degree Evaluation”: <https://howdy.tamu.edu/uPortal/f/my-record/>

Notes:



**NSC Check-out**

I understand that the courses indicated on this guide are those my advisor recommends. I acknowledge that if I make changes without consulting my advisor, I risk taking courses that will not count toward my degree, not count toward financial aid, and/or could delay progress to degree.

Signature: \_\_\_\_\_

# Marine Engineering Technology | 2022-2023 Catalog | Major Guide

Notes:

Major	TAMUG Course Options					
<b>Major Coursework</b>	MARE 100 ^MARE 207 MARE 305 MARE 399 MARE 481	MARE 111 MARE 209 MARE 306 MARE 402	MARE 112 MARE 211 MARE 307 MARE 405	^MARE 202 MARE 242 MARE 309 MARE 441	^MARE 205 MARE 243 MARE 312 MARE 451	^MARE 206 MARE 261 MARE 313 MARE 452
<b>Major Electives</b> <sup>6</sup> Select 6 hours	MARE 400 - 499 (Excluding MARE 405)					
<b>Technical Electives</b> <sup>6</sup> Select 6 hours	In consultation with advisor: MASE 100-499    OCEN 100-499		MARE 100-499 CVEN 100-499	MARR 300-499 MATH 100-499	MARS 100-499 PHYS 100-499	MART 300-499 OCNG 300-499

^ Requires C or better

Core	Texas A&M University at Galveston Course Options					
<b>Communication</b> <sup>6</sup> Select 2 courses	Required: Select 1 from:	†ENGL 104 COMM 203	COMM 205	†ENGL 203	ENGL 210	
<b>Mathematics</b> <sup>8</sup> Both courses required	^MATH 151	MATH 152				
<b>Life &amp; Physical Sciences</b> <sup>12</sup> All courses required	CHEM 107	CHEM 117	^PHYS 206	^PHYS 226	^PHYS 207	^PHYS 227
<b>Language, Philosophy, Culture</b> <sup>3</sup> Select 1 course	†ANTH 210 ENGL 335 HIST 242	ANTH 316 *ENGL 338 MAST 270	*ENGL 204 *ENGL 374 †PHIL 111	*ENGL 253 *GEOG 202 PHIL 251	ENGL 330 *GEOG 301	ENGL 334
<b>Creative Arts</b> <sup>3</sup> Select 1 course	*ARTS 150 †PERF 301	ENGL 212	*ENGL 251	HISP 204	*PERF 226	*PERF 281
<b>Social &amp; Behavioral Science</b> <sup>3</sup> Select 1 course	ANTH 202 *MARS 210	*COMM 365 *PBSI 107	ECON 202 *SOCI 205	ECON 203 *SPMT 336	*GEOG 201 *SPMT 337	*KINE 282
<b>American History</b> <sup>6</sup> Select 2 courses	HIST 105	HIST 106	HIST 226	HIST 232		
<b>Political Science</b> <sup>6</sup> Both courses required	POLS 206	POLS 207				

University	Texas A&M University at Galveston Course Options					
<b>Writing Intensive</b> <sup>6</sup>	MARE 405	MARE 452				
<b>International and Cultural Diversity</b> <sup>3</sup> Select 1 course	Note that any * marked major or core course will concurrently fulfill both requirements					
	*ARTS 150 *ENGL 374 MARA 440 MART 400 *SOCI 205	*COMM 365 *GEOG 201 MARE 400 MAST 411 *SPMT 336	*ENGL 204 *GEOG 202 MARR 400 *PERF 226 *SPMT 337	*ENGL 251 *GEOG 301 *MARS 210 *PERF 281	*ENGL 253 HIST 405 *MARS 280 NAUT 400	*ENGL 338 *KINE 282 *MARS 432 *PBSI 107
	Pending final approval					
<b>Cultural Discourse</b> <sup>3</sup> Select 1 course	Note that any † marked major or core course will concurrently fulfill both requirements					
	†ANTH 210 MAST 340	†ENGL 104 †PERF 301	†ENGL 203 †PHIL 111	FSCI 334	MARA 373	MAST 226
<b>General Electives</b>	Free electives as needed to reach 120 cumulative hours					

- Courses in this section can concurrently fulfill a Core or Major Requirement;
- Two semesters of a single foreign language is required for students who did not complete the foreign language req in high school