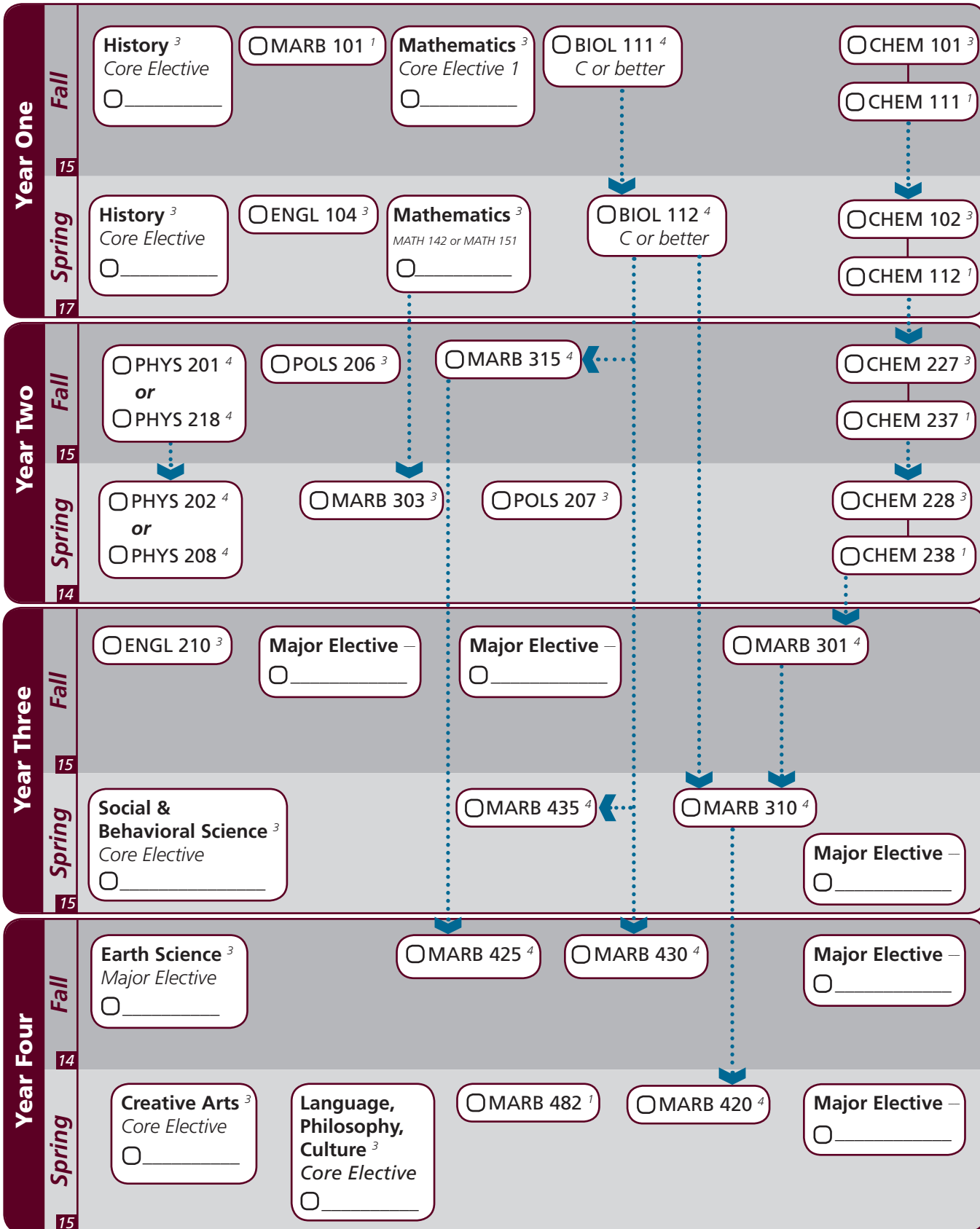


Notes: _____

- Foreign Language ⁶
- CAEX 001 ICD ³
- CAEX 004 ICD ³



I understand that the courses indicated on this sheet are required for my degree. If I change any of the course recommendations without consulting an academic advisor, it could affect my graduation timing, financial aid or could not count towards my degree.

Student Signature: _____ **Date:** _____

Academic Advisor Signature: _____ **Date:** _____

Key

- Pre-requisite
- Co-requisite
- ³ Course Credit Hrs
- ¹⁵ Semester Credit Hrs

Notes: _____

Major	Texas A&M University at Galveston Course Options					
Major Courses ⁴¹	BIOL 111 MARB 315	BIOL 112 MARB 430	MARB 101 MARB 420	MARB 301 MARB 425	MARB 303 MARB 435	MARB 310 MARB 482
Major Electives ¹⁹ <i>Select 20 hours</i>	BIOL 351 MARB 400 MARB 410	MARB 311 MARB 401 MARB 430	MARB 330 MARB 403 MARB 466	MARB 335 MARB 404 MARS 360	<i>MARB 340</i> <i>MARB 407</i> MARS 305	MARB 360 MARB 408 MARS 325
Earth Science Elective ³ <i>Select 1 course</i>	GEOL 101-499, OCNG 251-499					
A cumulative 2.0 GPR must be achieved on all major requirement courses						

Core	Texas A&M University at Galveston Course Options					
Communication ⁶ <i>Both courses required</i>	ENGL 104	ENGL 210				
Mathematics ⁶ <i>Select 2 courses</i>	1 from: MATH 140, MATH 141, MATH 150, MATH 152, PHIL 240 1 from: MATH 142 or MATH 151					
Life & Physical Sciences ⁹ <i>All courses required</i>	CHEM 101 CHEM 228	CHEM 111 CHEM 238	CHEM 102 PHYS 201 or 218	CHEM 112 PHYS 202 or 208	CHEM 227	CHEM 237
Language, Philosophy, Culture ³ <i>Select 1 course</i>	<i>ANTH 210</i> ENGL 334 HIST 242	ANTH 316 ENGL 335 PHIL 251	<i>ENGL 204</i> <i>ENGL 338</i> <i>SPAN 201</i>	<i>ENGL 222</i> <i>ENGL 374</i> <i>SPAN 202</i>	<i>ENGL 253</i> <i>GEOG 202</i>	ENGL 330 <i>GEOG 301</i>
Creative Arts ³ <i>Select 1 course</i>	<i>ARTS 150</i> <i>MUSC 226</i>	ENGL 212	<i>ENGL 251</i>	KINE 210	HISP 204	MAST 352
Social & Behavioral Science ³ <i>Select 1 course</i>	ANTH 202 PSYC 107	<i>COMM 365</i> <i>SOCI 205</i>	ECON 202	ECON 203	<i>GEOG 201</i>	<i>MARS 210</i>
American History ⁶ <i>Select 2 courses</i>	HIST 105	HIST 106	HIST 226	HIST 232		
Govt/Political Science ⁶ <i>Both courses required</i>	POLS 206	POLS 207				

University	Texas A&M University at Galveston Course Options					
Writing Intensive ⁶	MARB 435	MARB 482				
International and Cultural Diversity ⁶ <i>Select 2 courses</i> <i>Note that any blue marked major or core course will concurrently fulfill both requirements</i>	<i>ANTH 210</i> <i>ENGL 251</i> <i>GEOG 201</i> <i>MARB 407</i> <i>MART 400</i> <i>SPAN 201</i>	<i>ARTS 150</i> <i>ENGL 253</i> <i>GEOG 202</i> <i>MARE 400</i> <i>MAST 411</i> <i>SPAN 202</i>	<i>COMM 365</i> <i>ENGL 338</i> <i>GEOG 301</i> <i>MARR 400</i> <i>MUSC 226</i>	<i>ECON 452</i> <i>ENGL 339</i> <i>HIST 405</i> <i>MARS 210</i> <i>NAUT 400</i>	<i>ENGL 204</i> <i>ENGL 374</i> <i>MARA 440</i> <i>MARS 280</i> <i>POLS 366</i>	<i>ENGL 222</i> <i>FILM 251</i> <i>MARB 340</i> <i>MARS 432</i> <i>SOCI 205</i>

Courses in this section can concurrently fulfill a Core or Major Requirement;
Two semesters of a single foreign language is required for students who did not complete the foreign language req in high school